

0CNP4-M09100EN

Directions for the Parts Catalog.

1. This Parts Catalog shows both standard and optional parts.
2. Parts may change without prior notice.
3. The following is an example of the Parts Catalog format.

REF.	LEV.	PARTS NO.	DESCRIPTION	Q'TY						I	R
				(A)	(B)	(C)	(D)	(E)	(F)		
1	1	729595-51390	FUEL INJECTION PUMP	1	1	1	1	1			1
1-1	1	729595-51391	FUEL INJECTION PUMP	1	1	1	1	1		N	1
		(A=E00185) (B=E00200)									
3	2	26022-060162	SCREW M 6X 16	9	9	9	9	9			
3-1	2	26022-060162	SCREW M 6X 16	4	4	4	4	4		K	
		(A=E00156) (B=E00156) (C=E00156) (D=E00156) (E=E00156)									
4	2	129470-51040	CAMSHAFT	1	1	1	1	1			
5	2	122710-51050	BEARING, ROLLER	2	2	2	2	2			
6	2	129470-51060	RETAINER	1	1	1	1	1			

Remarks
(1) BOOST COMPEMSATOR TYPE. OPTIONAL PART, TO E00155,(4JH-DT, 4JH-DTZ

① Ref. No.

The Ref. No. listed may not be in accordance with the illustration Ref. No.

(Ex.) Illustration No.

List Ref No.

1

1

(Before change)

1-1

(After change)

For interchangeable symbols N, R and K, illustrations for new parts may be abbreviated.

② Lev. (Level)

Level indication

The numbers below indicate the level of relativity towards the main part.

1 ----- Main parts (Assembly parts)

2 ----- Sub component included in " 1 ".

3 ----- Sub component included in " 2 ".

Note) Parts that are not for sale are partially illustrated but not listed.

③ Interchangeability Symbol

When a part change takes place, one of the following interchangeability symbols is indicated beside the part.

Symbol	Interchangeability	Contents note
N	Old $\begin{matrix} \leftarrow \text{Yes} \\ \text{No} \rightarrow \end{matrix}$ New	New Part is interchangeable for Old Part but Old Part is not interchangeable for New Part.
Q	Old $\begin{matrix} \leftarrow \text{No} \\ \text{Yes} \rightarrow \end{matrix}$ New	New Part is not interchangeable for Old Part but Old Part is interchangeable for New Part.
R	Old $\begin{matrix} \leftarrow \text{Yes} \\ \text{Yes} \rightarrow \end{matrix}$ New	New/ Old Parts are both interchangeable.
S	Old $\begin{matrix} \leftarrow \text{No} \\ \text{No} \rightarrow \end{matrix}$ New	New/ Old Parts are both not interchangeable.
W		Part newly added.
Z		Part discontinued.
F		Not interchangeable by a single part but interchangeable together with related parts.
K		Changes only for used parts quantities.

④ Effective Machine No.

When a part changes, the effective Machine No. will be indicated in the (A)-(F) column.

Product Symbol	Product No.	Product Symbol	Product No.
C	Clutch No. Compressor No.	F	Machine No. (Agricultural Equip.)
D	Drive No.	M	Machine No.
E	Engine No.		

Note 1) A date may follow the symbol. (Ex.) 1996.01

Note 2) "XXXXX" and "ZZZZZ" are for parts that could not be predicted or for engine models that could not be identified.

Note 3) (A=E00185) is the E (Engine Serial Number) for the column (A) model (in this case 4JH-DT) after the parts design change.

⑤ Remarks

Figures or alphabets (symbols) are entered in the remarks column.

The comments (remarks) on parts that are indicated at the bottom of the illustration are the same symbols as those stated above.

PAINTING COLOR (Main body : YSR90H, 100H)

4091

SECTION	PAINTING COLOR	COLOR SPRAY	MAIN PARTS	COLOR CODE (FIGURE)
Main body	YANMAR Red 2	TOR-90000004	Handle	10
Main body	YANMAR Black	TOR-90220003	Chassis	12
Main body	YANMAR Navy gray	TOR-90390002	Lift cover	49

Please surely use **YANMAR** Genuine color spray any **YANMAR** agricultural machines.

Given painting color may be altered for improvement, etc.
without prior notice.

DEPLOYMENT ENGINE MODEL TABLE

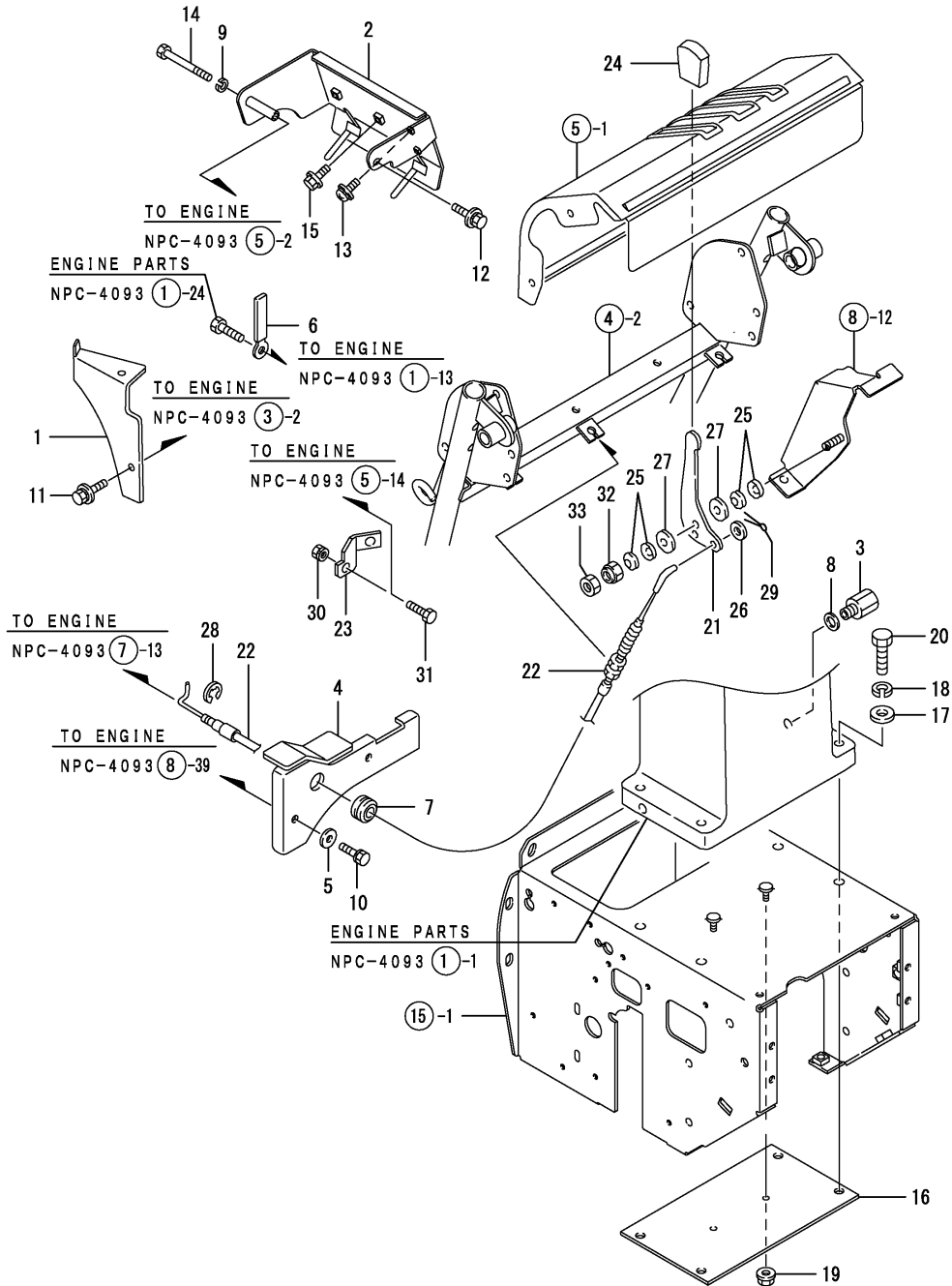
SNOWPLOW			ENGINE	
MODEL	PARTS CATALOG No.	UNIT NO.	MODEL	PARTS CATALOG No.
YSR90H (-S,-CH,-SCH)	0CNP4-G09100	~ F010859	GA240E-S(E)J1	0CNP4-G09300
		F010860 ~	GA240E-AS(E)J1	0CNP5-G22800

Contents

Fig. No.	Fig. Name
ENGINE RELATED SECTION	
1.	ENGINE RELATED
DRIVE TRAVEL SECTION	
2.	TENSION CLUTCH
3.	ENGINE PULLEY & BELT
CONTROL SECTION	
4.	HANDLE
5.	CONTROL PANEL
6.	DEAD MAN LEVER
7.	CLUTCH & CLUTCH LOCK
8.	CHANGE LEVER
9.	CHANGE ROD
10.	BRAKE
11.	BYPASS LEVER
12.	CHUTE LEVER
13.	CHUTE HANDLE
14.	LIFTING
CHASSIS,COVER & CRAWLER SECTI.	
15.	CHASSIS FRAME
16.	BELT COVER
17.	CRAWLER

Fig. No.	Fig. Name
ELECTRICAL PARTS SECTION	
18.	BATTERY
19.	HARNESS & SWITCH
20.	HARNESS & SWITCH
21.	LAMP
SNOW REMOVING SECTION	
22.	SNOW REMOVING FRAME
23.	AUGER COVER
24.	CHUTE
25.	GEAR CASE
31.	(25A)GEAR CASE
26.	AUGER & BLOWER
LABELS & ACCESSORIES SECTION	
27.	LABELS
28.	LABELS (SAFETY)
29.	TOOLS & ACCESSORIES
TRANSMISSION SECTION	
30.	TRANSMISSION

Fig.1. ENGINE RELATED

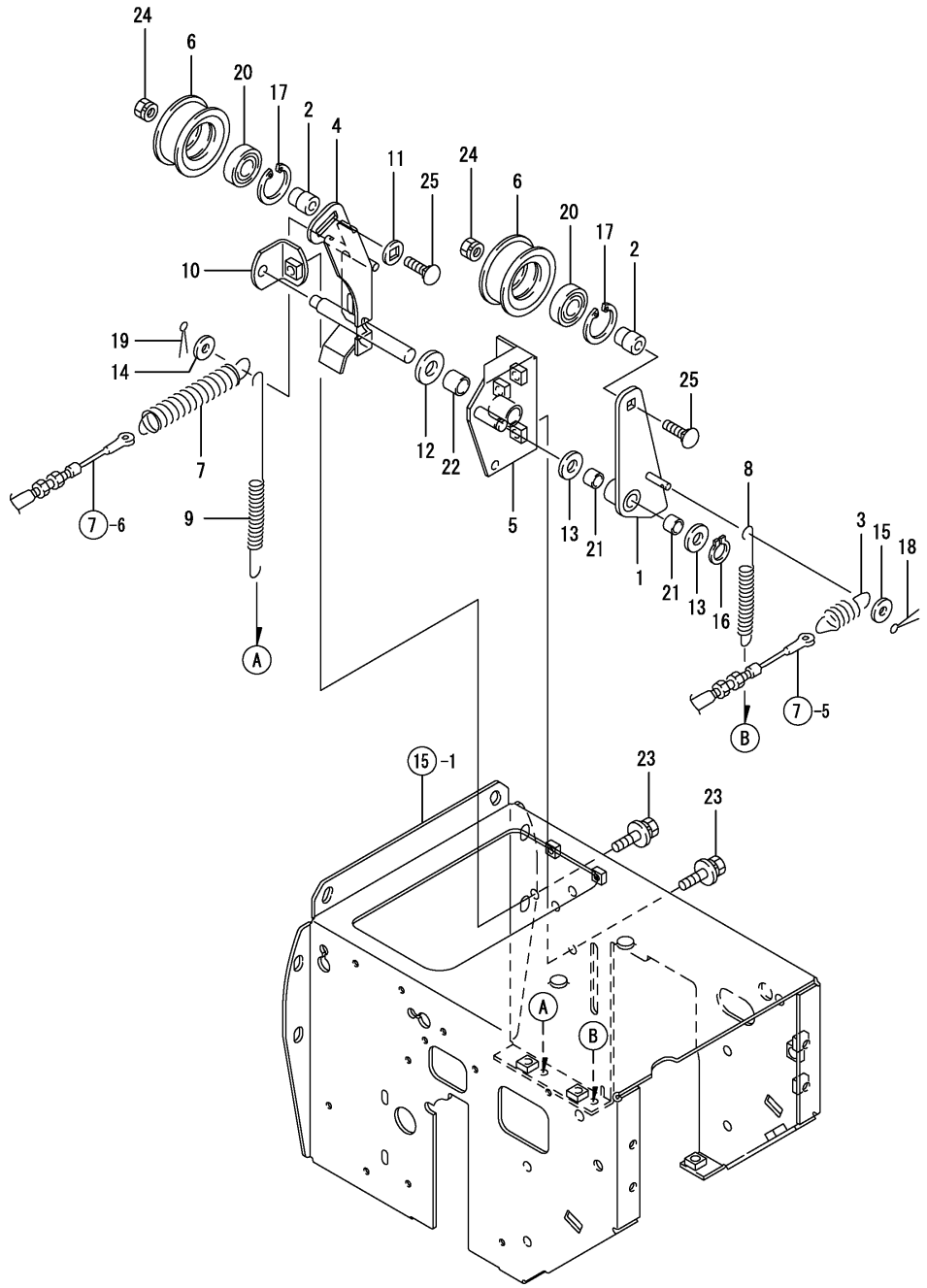


(A)=YSR90H
(B)=YSR90H-S
(C)=YSR100H-S

(D)=
(E)=
(F)=

No.	Lev.	Parts No.	Description	Qty						I	R
				(A)	(B)	(C)	(D)	(E)	(F)		
1	1	1N1723-00061	COVER B,AMXILIARY	1	1	1					
2	1	1N3370-00200	BRACKET, ELECTRIC	1	1	1					
3	1	1N3021-00250	JOINT,WASTE OIL	1	1	1					
4	1	1N1723-00331	COVER	1	1	1					
5	1	1J3999-02010	WASHER 6	2	2	2					
6	1	1N1710-32600	CLAMP 8X70	1	1	1					
7	1	194080-58820	GROMMET, 15	1	1	1					
8	1	22190-120000	WASHER, SEAL 12	1	1	1					
9	1	22217-060000	WASHER, SPRING 6	1	1	1					
10	1	26016-060204	BOLT M 6X 20	2	2	2					
11	1	26018-060124	BOLT M 6X 12	2	2	2					
12	1	26018-060124	BOLT M 6X 12	1	1	1					
13	1	26023-040062	SCREW, M4X 6	2	2	2					
14	1	26116-060552	BOLT, M6X 55 PLATED	1	1	1					
15	1	26106-060162	BOLT, M6X 16 PLATED		2	2					
16	1	1N3370-01000	PLATE, ENGINE CATCH	1	1	1					
17	1	22137-100000	WASHER, 10	4	4	4					
18	1	22217-100000	WASHER, SPRING 10	4	4	4					
19	1	26051-060002	NUT, M6	2	2	2					
20	1	26116-100402	BOLT, M10X 40 PLATED	4	4	4					
21	1	1N3390-02100	LEVER,ACCEL	1	1	1					
22	1	1N3300-02150	WIRE ASSY, THROTTLE	1	1	1					
23	1	1N3400-02200	SEAT,FO COCK	1	1	1					
24	1	194273-47910	KNOB, LEVER	1	1	1					
25	1	1N1570-51130	SPRING,BELLEVILLE	4	4	4					
26	1	22117-060000	WASHER, 6	1	1	1					
27	1	22137-080000	WASHER, 8	2	2	2					
28	1	22272-000050	RING, E- 5	1	1	1					
29	1	22417-200100	COTTER PIN 2.0X10	1	1	1					
30	1	26051-060002	NUT, M6	1	1	1					
31	1	26117-060122	BOLT M 6X 12 PLATED	1	1	1					
32	1	26347-080002	NUT, M8	1	1	1					
33	1	26717-080002	NUT, M8	1	1	1					

Fig.2. TENSION CLUTCH

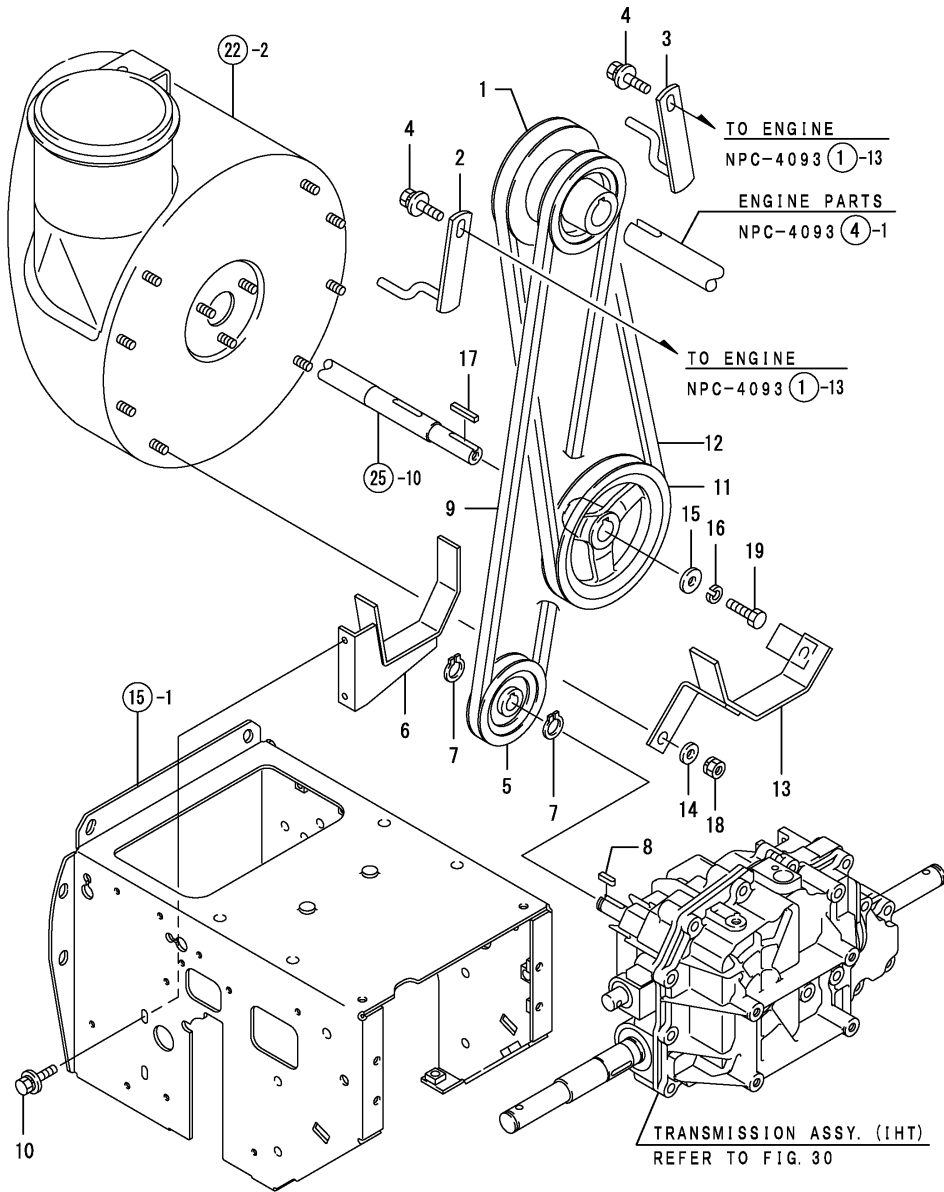


(A)=YSR90H
 (B)=YSR90H-S
 (C)=YSR100H-S

(D)=
 (E)=
 (F)=

No.	Lev.	Parts No.	Description	Qty						I	R
				(A)	(B)	(C)	(D)	(E)	(F)		
1	1	1N3370-11000	TENSION,TRAVEL	1	1	1					
2	1	1N3370-11050	SHAFT	2	2	2					
3	1	1N3335-11080	SPRING	1	1	1					
4	1	1N3400-11100	TENSION,WORK	1	1	1					
5	1	1N3370-11200	FULCRUM,TENSION	1	1	1					
6	1	1N3021-11240	PULLEY 63,TENSION	2	2	2					
7	1	1N3370-11271	SPRING, 16X134	1	1	1					
8	1	1N3400-11300	SPRING,13X168	1	1	1					
9	1	1N3370-11310	SPRING, 11X210	1	1	1					
10	1	1N3370-11400	SUPPORT, TENSION	1	1	1					
11	1	1N3320-71290	WASHER	1	1	1					
12	1	22117-120000	WASHER, 12	1	1	1					
13	1	22137-100000	WASHER, 10	2	2	2					
14	1	22157-060000	WASHER, 6	1	1	1					
15	1	22157-060000	WASHER, 6	1	1	1					
16	1	22242-000100	RING, 10	1	1	1					
17	1	22252-000350	RING, 35	2	2	2					
18	1	22417-160100	COTTER PIN	1	1	1					
19	1	22417-160100	COTTER PIN	1	1	1					
20	1	24107-062024	BEARING, BALL 6202ZZ	2	2	2					
21	1	24550-010100	BUSH, 10X10	2	2	2					
22	1	24550-013150	BUSH, 13X15	1	1	1					
23	1	26018-080162	BOLT, M8X 16	4	4	4					
24	1	26051-080002	NUT, M8	2	2	2					
25	1	26487-080352	BOLT, M8X35	2	2	2					

Fig.3. ENGINE PULLEY & BELT

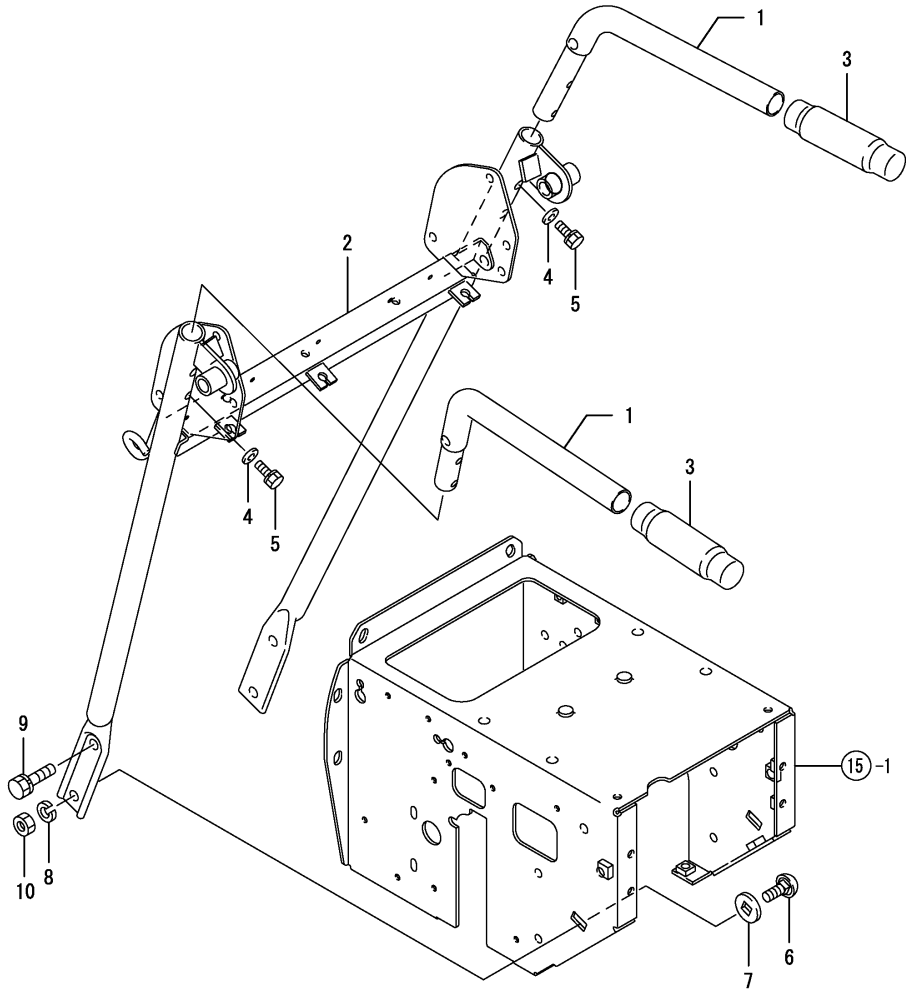


(A)=YSR90H
(B)=YSR90H-S
(C)=YSR100H-S

(D)=
(E)=
(F)=

No.	Lev.	Parts No.	Description	Qty						I	R
				(A)	(B)	(C)	(D)	(E)	(F)		
1	1	1N3370-12000	PULLEY,ENGINE	1	1	1					
2	1	1N3021-12100	RETAINER A,BELT	1	1	1					
3	1	1N3021-12150	RETAINER B,BELT	1	1	1					
4	1	26018-080162	BOLT, M8X 16	2	2	2					
5	1	1N3021-12020	PULLEY 85A	1	1	1					
6	1	1N3021-12300	GUIDE B,BELT	1	1	1					
7	1	22242-000150	RING, 15	2	2	2					
8	1	22550-050201	KEY, 5X 20	1	1	1					
9	1	25122-002901	V-BELT, A29H	1	1	1					
10	1	26018-060164	BOLT M 6X 16	2	2	2					
11	1	1N3370-12010	PULLEY 144B	1	1	1					
12	1	1N3021-12050	V-BELT LB31-AG6	1	1	1					
13	1	1N3370-12200	GUIDE A,BELT	1	1	1					
14	1	22137-080000	WASHER, 8	2	2	2					
15	1	22157-080000	WASHER, 8	1	1	1					
16	1	22217-080000	WASHER, SPRING 8	1	1	1					
17	1	22550-050300	KEY 5X30	1	1	1					
18	1	26051-080002	NUT, M8	2	2	2					
19	1	26116-080252	BOLT, M8X 25 PLATED	1	1	1					

Fig.4. HANDLE

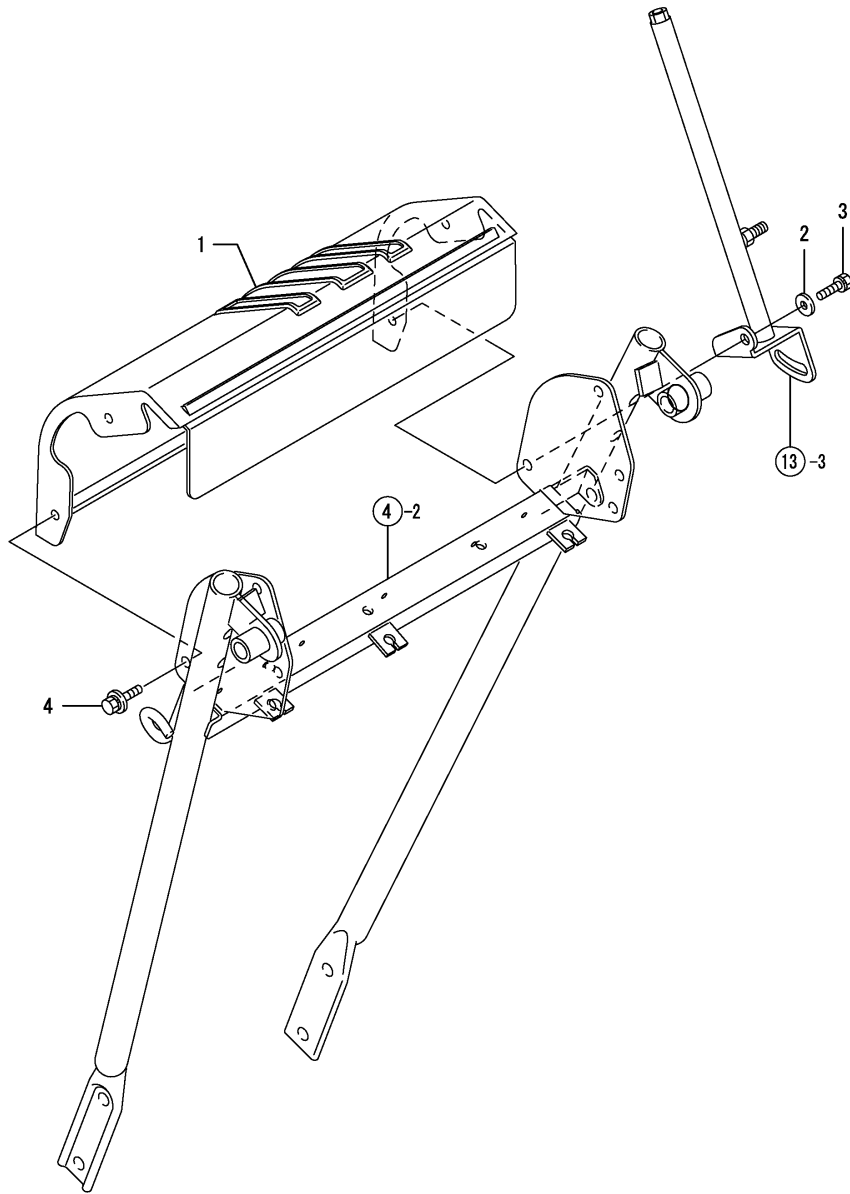


(A)=YSR90H
(B)=YSR90H-S
(C)=YSR100H-S

(D)=
(E)=
(F)=

No.	Lev.	Parts No.	Description	Qty						I	R
				(A)	(B)	(C)	(D)	(E)	(F)		
1	1	1N3390-30000	HANDLE	2	2	2					
2	1	1N3400-30100	FRAME,HANDLE	1	1	1					
3	1	1N1710-82140	GRIP BK-8,HANDLE	2	2	2					
4	1	22137-080000	WASHER, 8	4	4	4					
5	1	26016-080162	BOLT, M8X 16	4	4	4					
6	1	1N3360-30300	BOLT	2	2	2					
7	1	1N3360-30350	WASHER	2	2	2					
8	1	22217-100000	WASHER, SPRING 10	2	2	2					
9	1	26016-100202	BOLT	2	2	2					
10	1	26717-100002	NUT, M10	2	2	2					

Fig.5. CONTROL PANEL

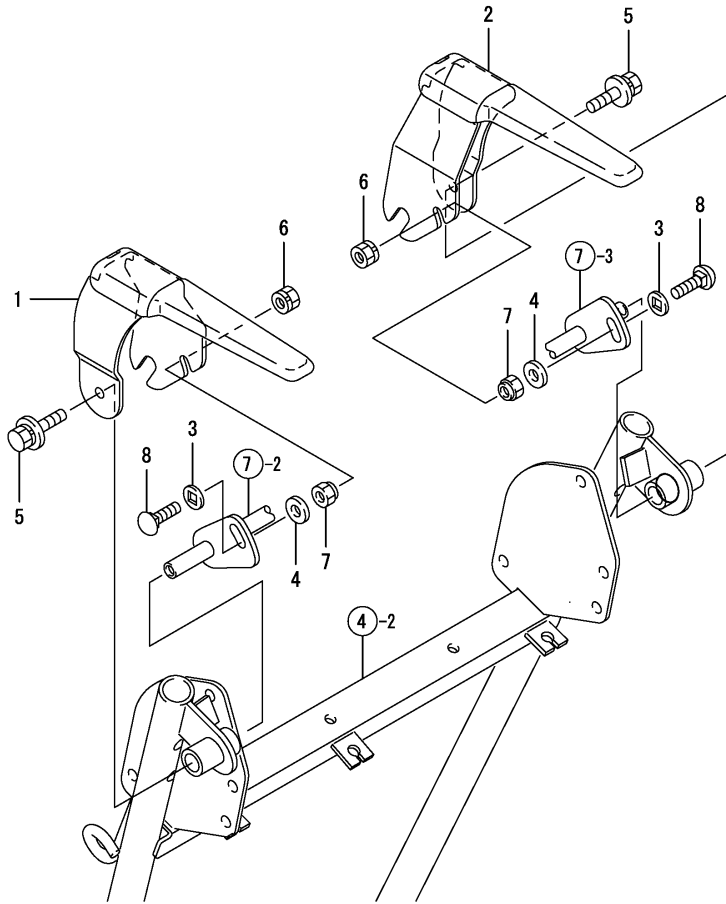


(A)=YSR90H
 (B)=YSR90H-S
 (C)=YSR100H-S

(D)=
 (E)=
 (F)=

No.	Lev.	Parts No.	Description	Q'ty						I	R
				(A)	(B)	(C)	(D)	(E)	(F)		
1	1	7N3405-30290	PL.ASSY,OPERAT.PANEL	1	1	1					
2	1	22157-060000	WASHER, 6	1	1	1					
3	1	26016-060162	BOLT, M6X 16	1	1	1					
4	1	26018-060124	BOLT M 6X 12	3	3	3					

Fig.6. DEAD MAN LEVER

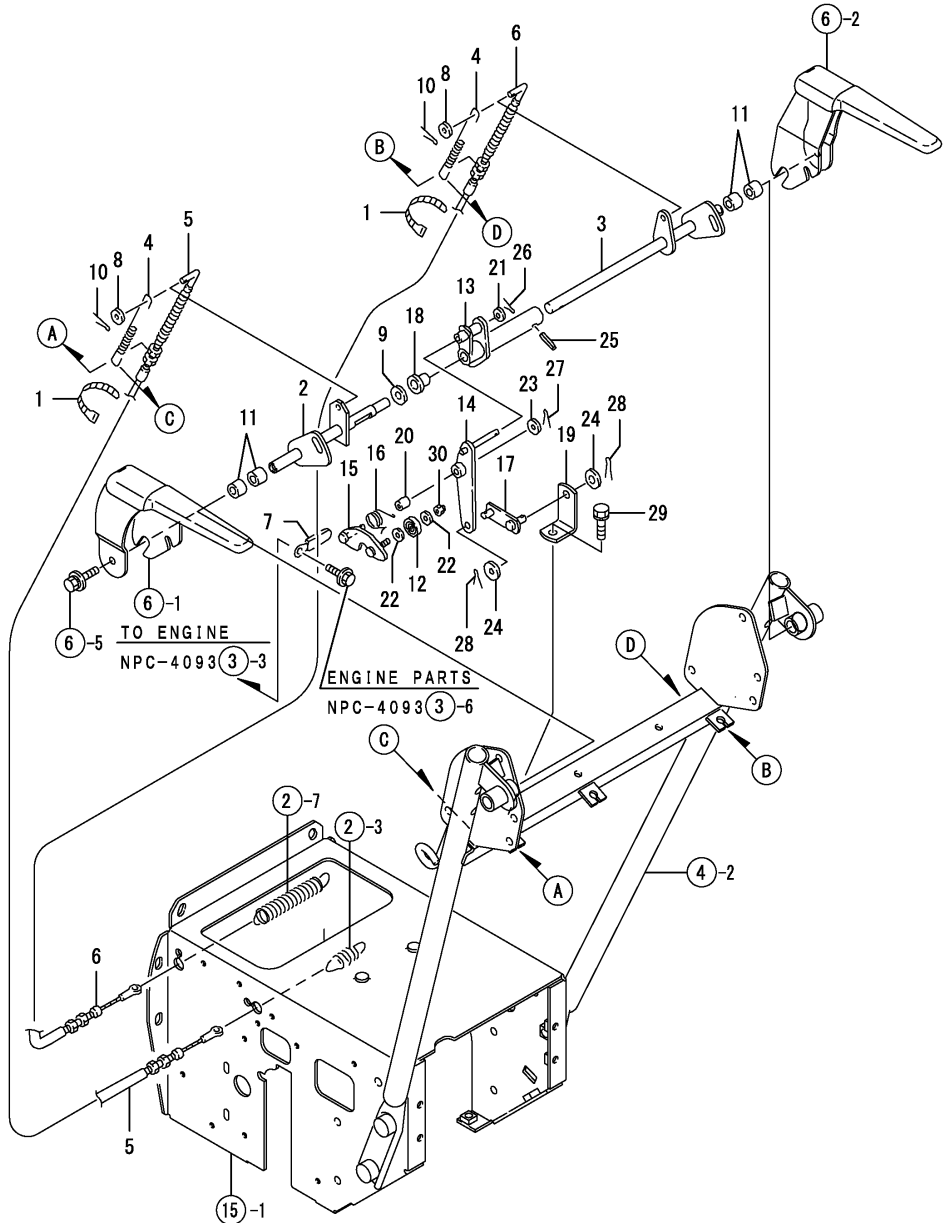


(A)=YSR90H
 (B)=YSR90H-S
 (C)=YSR100H-S

(D)=
 (E)=
 (F)=

No.	Lev.	Parts No.	Description	Q'ty						I	R
				(A)	(B)	(C)	(D)	(E)	(F)		
1	1	1N3390-31000	LEVER, DEAD MAN L	1	1	1					
2	1	1N3390-31050	LEVER, DEAD MAN R	1	1	1					
3	1	1N3320-71290	WASHER	2	2	2					
4	1	22137-080000	WASHER, 8	2	2	2					
5	1	26018-080164	BOLT M 8X 16	2	2	2					
6	1	26051-080002	NUT, M8	2	2	2					
7	1	26347-080002	NUT, M8	2	2	2					
8	1	26487-080252	BOLT, M8X25	2	2	2					

Fig.7. CLUTCH & CLUTCH LOCK

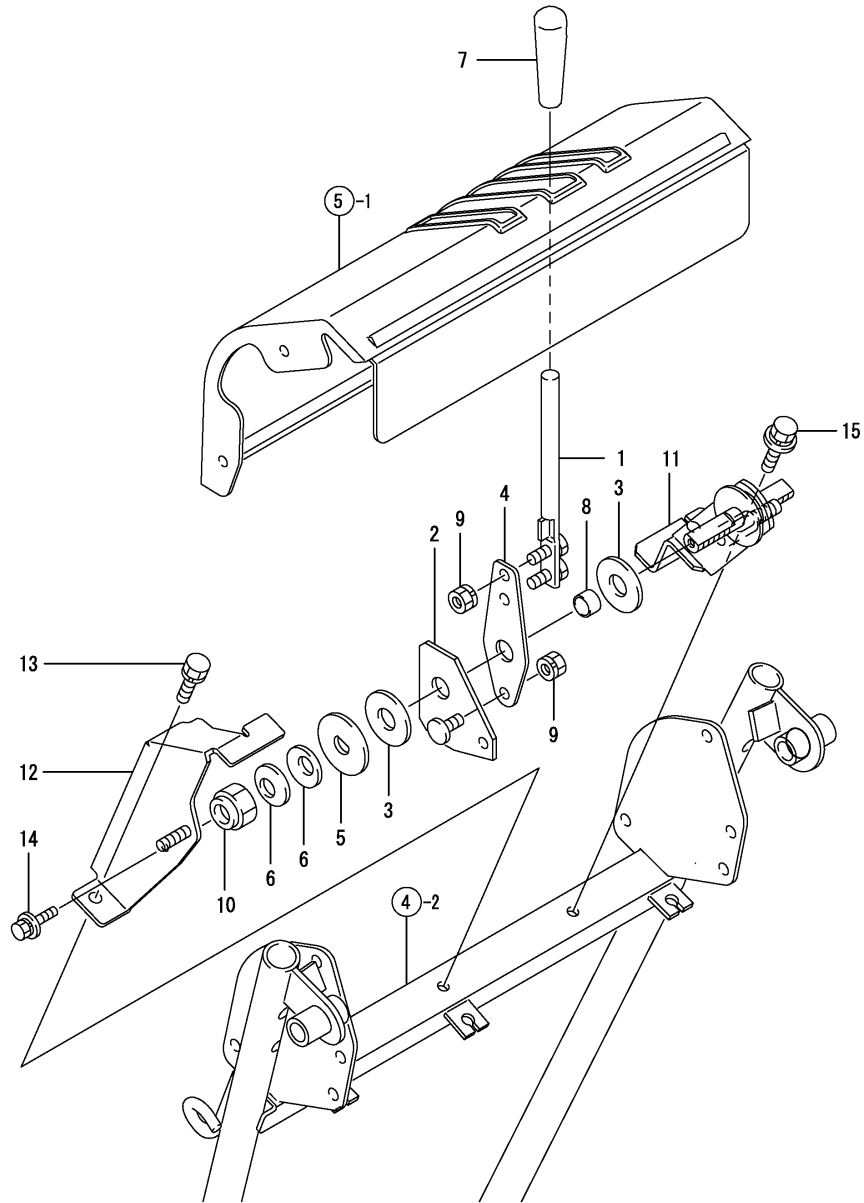


(A)=YSR90H
 (B)=YSR90H-S
 (C)=YSR100H-S

(D)=
 (E)=
 (F)=

No.	Lev.	Parts No.	Description	Qty						I	R
				(A)	(B)	(C)	(D)	(E)	(F)		
1	1	1J3999-07000	BAND 100B	3	3	3					
2	1	1N3370-31200	SHAFT,TRAVEL CLUTCH	1	1	1					
3	1	1N3370-31300	SHAFT,SNOW RMV.CLTCH	1	1	1					
4	1	1N3370-31450	SPRING, 9X145	2	2	2					
5	1	1N3370-31600	WIRE,TRAVEL CMP	1	1	1					
6	1	1N3370-31650	WIRE,SNOW,REMOVING	1	1	1					
7	1	1N1710-32600	CLAMP 8X70	1	1	1					
8	1	22117-060000	WASHER, 6	2	2	2					
9	1	22117-100000	WASHER, 10	1	1	1					
10	1	22417-200100	COTTER PIN 2.0X10	2	2	2					
11	1	24550-012150	BUSH, 12X15	4	4	4					
12	1	1J3999-06000	BEARING 626-2NSL	1	1	1					
13	1	1N3330-31350	ARMCLUTCH LOCK SHAFT	1	1	1					
14	1	1N3300-31400	CATCH,LOCK CLAW	1	1	1					
15	1	1N3021-31451	CLAW,CLUTCH LOCK	1	1	1					
16	1	1N3021-31480	SPRING,LOCK CLAW	1	1	1					
17	1	1N3300-31500	GUIDE,LOCK CLAW	1	1	1					
18	1	1N3021-31580	BUSH 10X15,FLANGED	1	1	1					
19	1	1N3370-31700	SEAT, LOCK CLAW	1	1	1					
20	1	1C1011-45020	BUSH, 6X8X10	1	1	1					
21	1	22117-060000	WASHER, 6	1	1	1					
22	1	22117-060000	WASHER, 6	2	2	2					
23	1	22117-060000	WASHER, 6	1	1	1					
24	1	22117-080000	WASHER, 8	2	2	2					
25	1	22351-050020	PIN, SPRING 5.0X20	1	1	1					
26	1	22417-160100	COTTER PIN	1	1	1					
27	1	22417-160100	COTTER PIN	1	1	1					
28	1	22417-200160	PIN, COTTER 2.0X16	2	2	2					
29	1	26016-080164	BOLT M 8X 16	1	1	1					
30	1	26347-060002	NUT, M6	1	1	1					

Fig.8. CHANGE LEVER



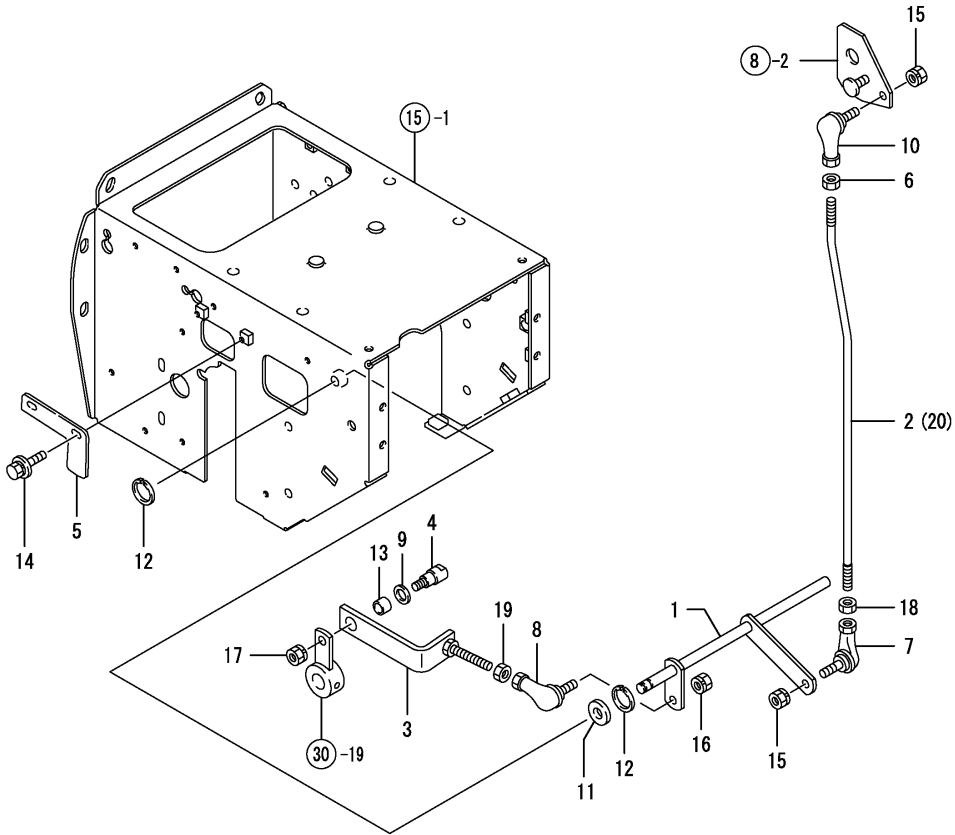
(A)=YSR90H
 (B)=YSR90H-S
 (C)=YSR100H-S

(D)=
 (E)=
 (F)=

No.	Lev.	Parts No.	Description	Q'ty						I	R
				(A)	(B)	(C)	(D)	(E)	(F)		
1	1	1N3360-32000	CHANGE LEVER	1	1	1					
2	1	1N3335-32050	ARM, CHANGE	1	1	1					
3	1	1N3330-32090	FRICTION PLATE	2	2	2					
4	1	1N3335-32090	SPRING, CHANGE LEVER	1	1	1					
5	1	1N1723-32350	LOCK WASHER	1	1	1					
6	1	1C6320-64680	SPRING, H14	2	2	2					
7	1	1E6570-64760	GRIP, LEVER 12	1	1	1					
8	1	24550-014100	BUSH, 14X10	1	1	1					
9	1	26051-080002	NUT, M8	3	3	3					
10	1	26357-140002	NUT, M14	1	1	1					
11	1	1N3370-32100	FULCRUM, LEVER	1	1	1					
12	1	1N3370-32400	CATCH, FULCRUM	1	1	1					
13	1	26016-080164	BOLT M 8X 16	1	1	1					
14	1	26018-060162	BOLT, M6X 16	1	1	1					
15	1	26018-080164	BOLT M 8X 16	1	1	1					

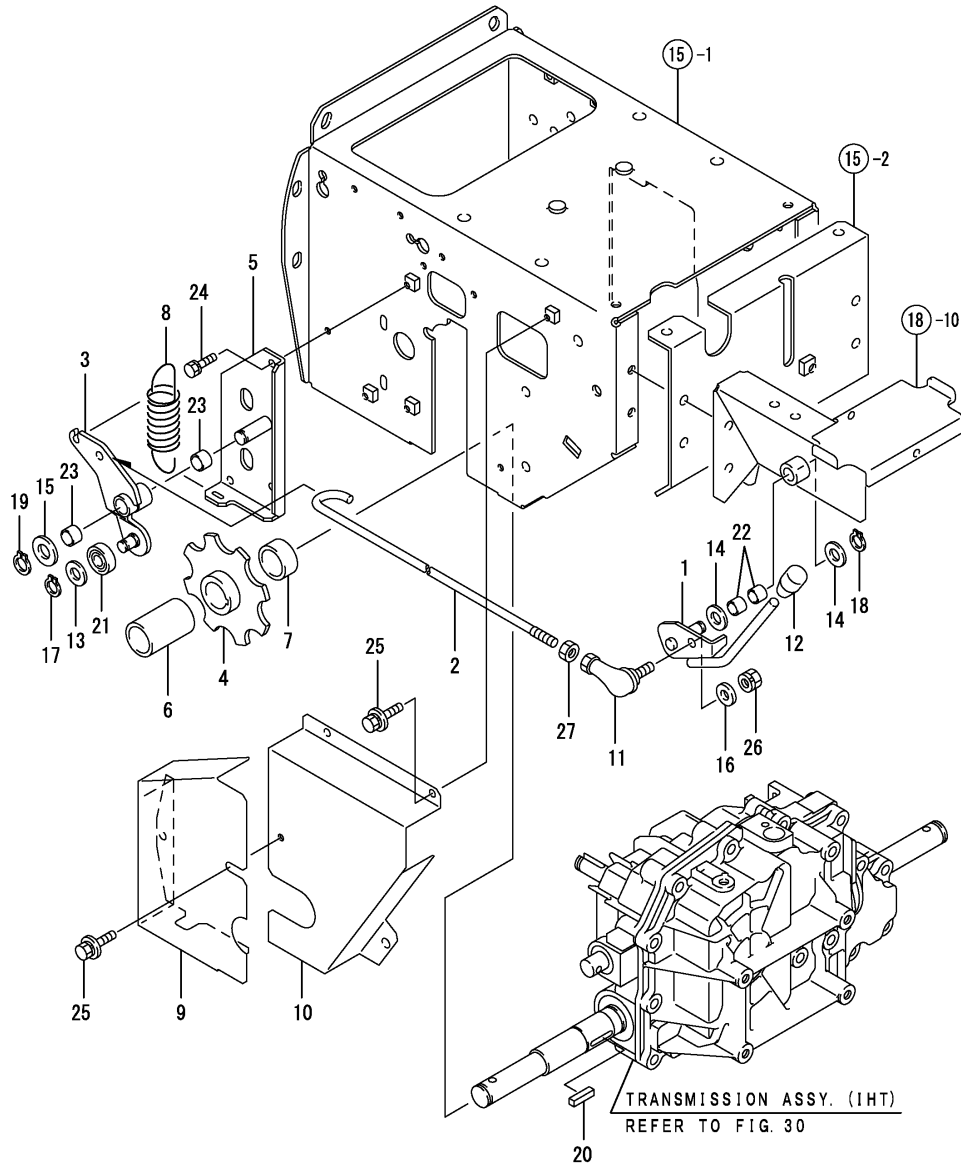
Fig.9. CHANGE ROD

(A)=YSR90H
 (B)=YSR90H-S
 (C)=YSR100H-S
 (D)=
 (E)=
 (F)=



No.	Lev.	Parts No.	Description	Q'ty						I	R
				(A)	(B)	(C)	(D)	(E)	(F)		
1	1	1N3335-32200	CHANG COUNTER	1	1	1					
2	1	1N3370-32200	ROD,CHANGE LEVER	1	1						
3	1	1N3370-32300	PLATE, CHANGE	1	1	1					
4	1	1N3335-32350	PIN,CHANGE STOPPER	1	1	1					
5	1	1N3021-32381	STOPPER,CHANGE	1	1	1					
6	1	1N1570-32950	NUT 8	1	1	1					
7	1	1E4760-43090	BALL RBL8,LINK	1	1	1					
8	1	1E4760-43090	BALL RBL8,LINK	1	1	1					
9	1	1S6240-61430	LINER, 12X19X1	1	1	1					
10	1	1E6740-64200	BALL BL8DL, LINK	1	1	1					
11	1	22137-100000	WASHER, 10	1	1	1					
12	1	22292-000100	RING, S-10	2	2	2					
13	1	24550-012060	BUSH, 12X 6	1	1	1					
14	1	26018-060124	BOLT M 6X 12	2	2	2					
15	1	26051-080002	NUT, M8	2	2	2					
16	1	26051-080002	NUT, M8	1	1	1					
17	1	26051-080002	NUT, M8	1	1	1					
18	1	26717-080002	NUT, M8	1	1	1					
19	1	26717-080002	NUT, M8	1	1	1					
20	1	1N3415-32200	ROD,CHANGE LEVER								1

Fig.10. BRAKE



(A)=YSR90H
(B)=YSR90H-S
(C)=YSR100H-S

(D)=
(E)=
(F)=

No.	Lev.	Parts No.	Description	Q'ty						I	R
				(A)	(B)	(C)	(D)	(E)	(F)		
1	1	1N3370-33001	LEVER,PARKING LEVER	1	1	1					
2	1	1N3370-33080	BAR, CONNECTING	1	1	1					
3	1	1N3370-33100	ARM ASSY, BRAKE ARM	1	1	1					
4	1	1N3370-33200	PLATE ASSY, BRAKE	1	1	1					
5	1	1N3370-33300	BASE ASSY, BRAKE	1	1	1					
6	1	1N3370-33400	COLLAR, BRAKE 50	1	1	1					
7	1	1N3370-33410	COLLAR, BRAKE 15	1	1	1					
8	1	1N3370-33450	SPRING,PARKING BRAKE	1	1	1					
9	1	1N3370-33500	COVER, FRONT	1	1	1					
10	1	1N3370-33550	COVER, REAR	1	1	1					
11	1	1E4760-43090	BALL RBL8,LINK	1	1	1					
12	1	1E5100-51430	KNOB CLUTCH(RED)	1	1	1					
13	1	22117-100000	WASHER, 10	1	1	1					
14	1	22117-100000	WASHER, 10	2	2	2					
15	1	22117-120000	WASHER, 12	1	1	1					
16	1	22137-080000	WASHER, 8	1	1	1					
17	1	22242-000100	RING, 10	1	1	1					
18	1	22242-000100	RING, 10	1	1	1					
19	1	22242-000120	RING, 12	1	1	1					
20	1	22550-050200	KEY 5X20	1	1	1					
21	1	24104-060004	BEARING, BALL 6000UU	1	1	1					
22	1	24550-010100	BUSH, 10X10	2	2	2					
23	1	24550-012100	BUSH 12X10	2	2	2					
24	1	26016-060122	BOLT, M6X 12	3	3	3					
25	1	26018-060124	BOLT M 6X 12	5	5	5					
26	1	26051-080002	NUT, M8	1	1	1					
27	1	26717-080002	NUT, M8	1	1	1					

Fig.11. BYPASS LEVER

(A)=YSR90H
 (B)=YSR90H-S
 (C)=YSR100H-S

(D)=
 (E)=
 (F)=

No.	Lev.	Parts No.	Description	Q'ty						I	R
				(A)	(B)	(C)	(D)	(E)	(F)		
1	1	1J3999-02010	WASHER 6	2	2	2					
2	1	1N3370-33600	LEVER,BYPASS VALVE	1	1	1					
3	1	1C6560-92610	SPRING, 8	2	2	2					
4	1	22137-080000	WASHER, 8	1	1	1					
5	1	26117-060304	BOLT M 6X 30 PLATED	1	1	1					
6	1	26117-080252	BOLT M 8X 25 PLATED	1	1	1					
7	1	26347-060002	NUT, M6	1	1	1					
8	1	26347-080002	NUT, M8	1	1	1					
9	1	26347-080002	NUT, M8	1	1	1					

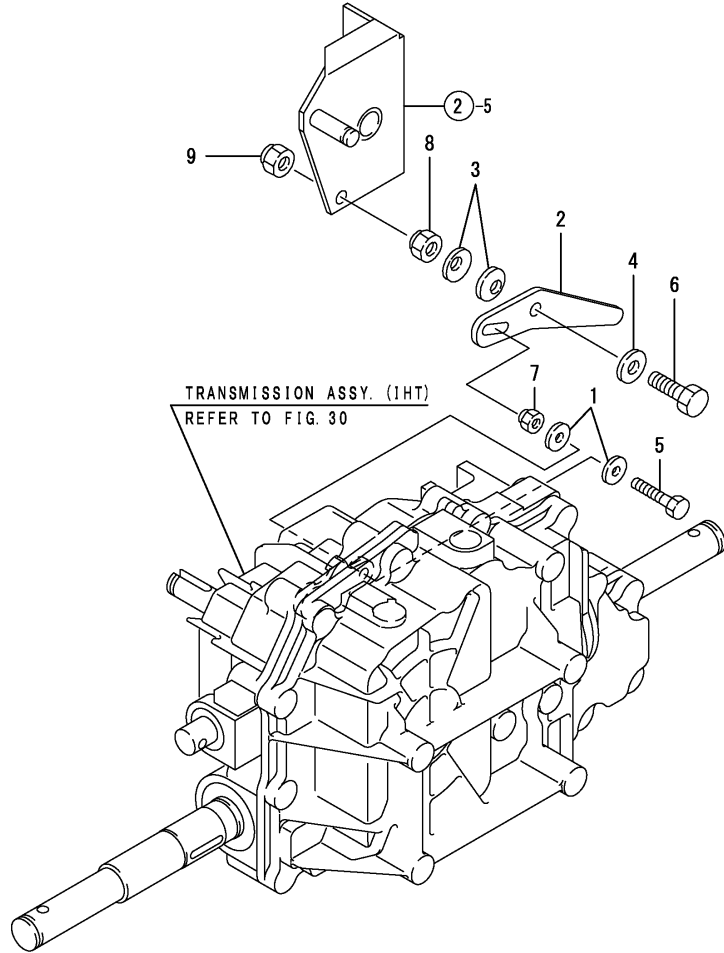
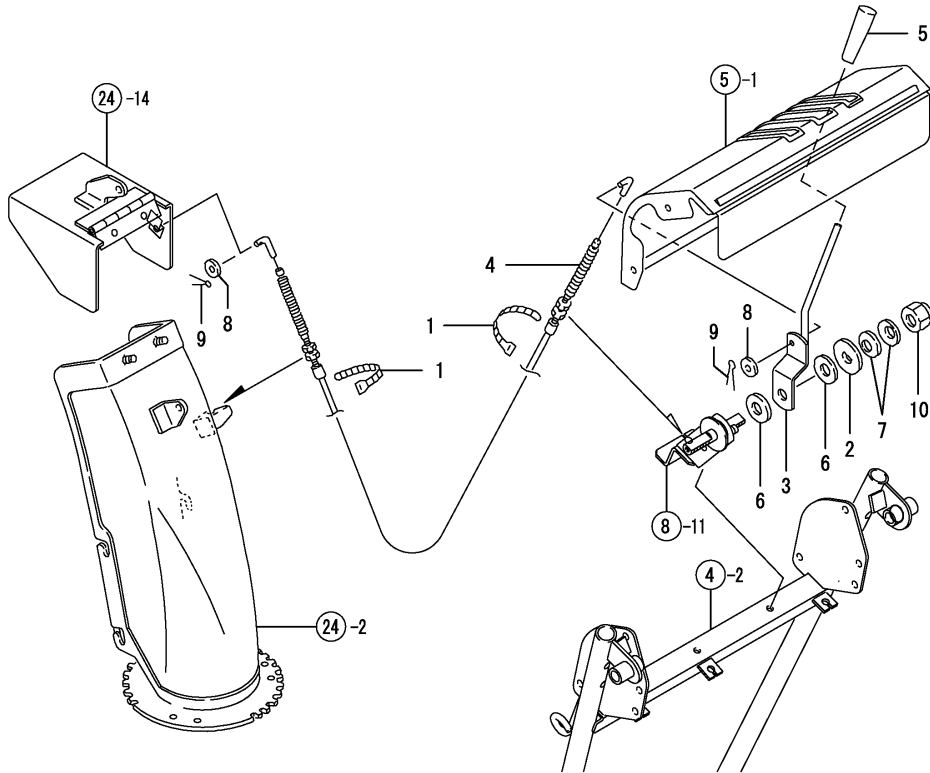


Fig.12. CHUTE LEVER



(A)=YSR90H
(B)=YSR90H-S
(C)=YSR100H-S

(D)=
(E)=
(F)=

No.	Lev.	Parts No.	Description	Q'ty						I	R
				(A)	(B)	(C)	(D)	(E)	(F)		
1	1	1J3999-07000	BAND 100B	2	2	2					
2	1	1N1723-32350	LOCK WASHER	1	1	1					
3	1	1N3370-34000	LEVER, CHUTE	1	1	1					
4	1	1N3300-34201	WIRE COMP.,SHOOT	1	1	1					
5	1	1A1140-58050	GRIP, STAND	1	1	1					
6	1	1E6680-64240	PLATE, FRICTION	2	2	2					
7	1	1C6320-64680	SPRING, H14	2	2	2					
8	1	22117-060000	WASHER, 6	2	2	2					
9	1	22417-200100	COTTER PIN 2.0X10	2	2	2					
10	1	26357-140002	NUT, M14	1	1	1					

Fig.13. CHUTE HANDLE

(A)=YSR90H (D)=
 (B)=YSR90H-S (E)=
 (C)=YSR100H-S (F)=

No.	Lev.	Parts No.	Description	Q'ty						I	R
				(A)	(B)	(C)	(D)	(E)	(F)		
1	1	1N3390-34350	HANDLE, CHUTE	1	1	1					
2	1	1N3021-34390	SPACER 10X14X1	1	1	1					
3	1	1N3390-34500	STAY,CHUTE HANDLE	1	1	1					
4	1	1N3390-34530	SUPPORT,HANDLE	1	1	1					
5	1	1N3390-34600	ROD,CONNECTION	1	1	1					
6	1	1N3330-34651	JOINT, CONNECTING	1	1	1					
7	1	1N3330-34700	JOINT FULCRUM	1	1	1					
8	1	1N3021-34710	JOINT FULCRUM,PIN 8	1	1	1					
9	1	1N3021-34720	RIVET 4X27.5	1	1	1					
10	1	1N1711-35520	GRIP,SHOOT	1	1	1					
11	1	1F5300-43300	BUSH 1015	1	1	1					
12	1	1N3260-73250	RIVET 4X19.5	1	1	1					
13	1	22137-060000	WASHER, 6	1	1	1					
14	1	22137-080000	WASHER, 8	1	1	1					
15	1	22372-040000	PIN, SNAP 4	1	1	1					
16	1	22417-200100	COTTER PIN 2.0X10	1	1	1					
17	1	22417-200160	PIN, COTTER 2.0X16	1	1	1					
18	1	26018-080204	BOLT M 8X 20	1	1	1					
19	1	26717-080002	NUT, M8	1	1	1					
20	1	26717-080002	NUT, M8	1	1	1					

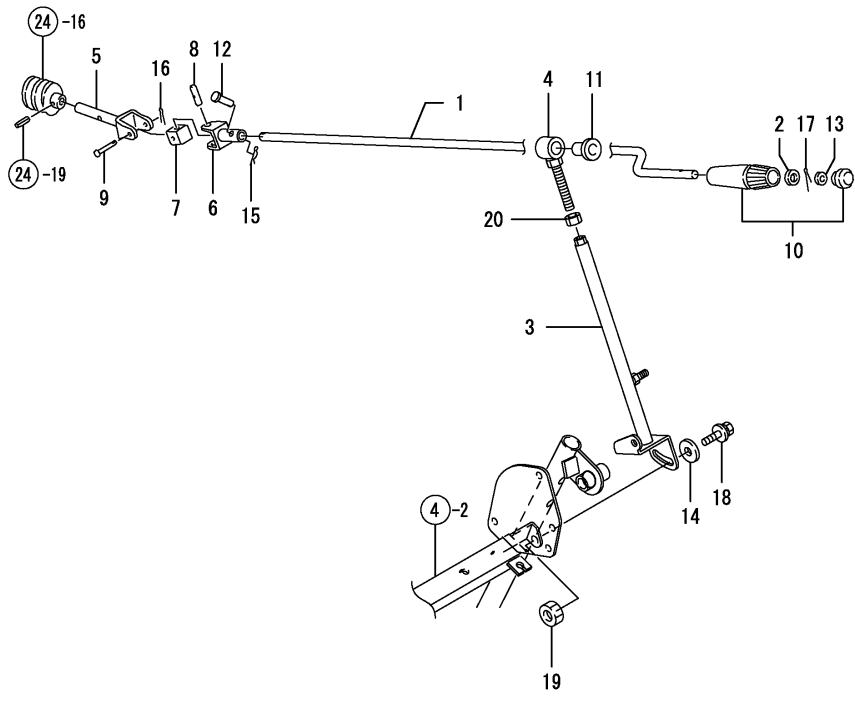
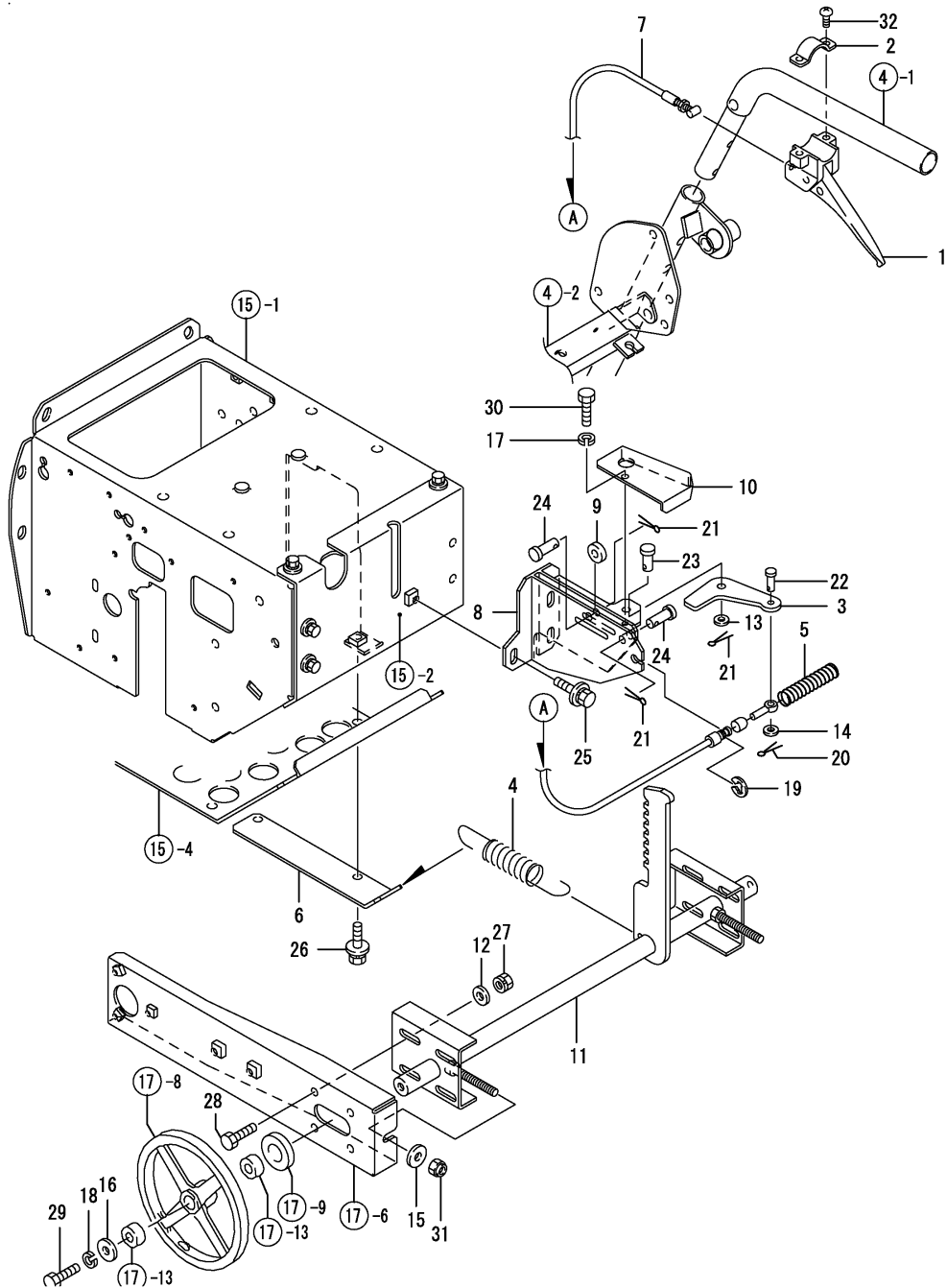


Fig.14. LIFTING

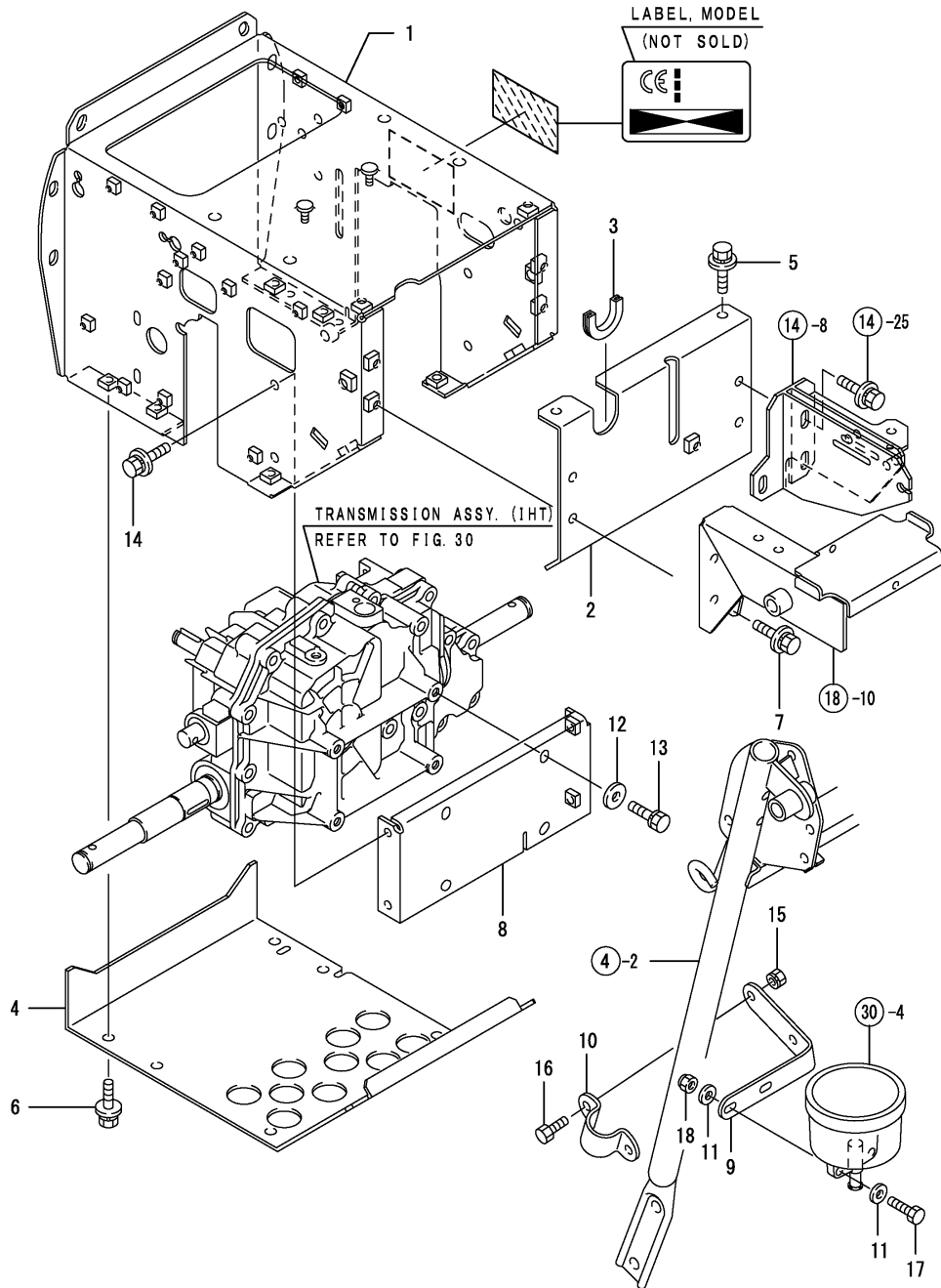


(A)=YSR90H
(B)=YSR90H-S
(C)=YSR100H-S

(D)=
(E)=
(F)=

No.	Lev.	Parts No.	Description	Qty						I	R
				(A)	(B)	(C)	(D)	(E)	(F)		
1	1	1N3390-35000	LEVER,LIFT	1	1	1					
2	1	1N3390-35060	PLATE	1	1	1					
3	1	1N3390-35100	PLATE,STOPPER	1	1	1					
4	1	1N3360-35150	LIFT SPRING	1	1	1					
5	1	1N3390-35150	SPRING,15X70	1	1	1					
6	1	1N3370-35160	STAY, LIFT SPRING	1	1	1					
7	1	1N3390-35250	WIRE,LIFTING	1	1	1					
8	1	1N3405-35300	SUPPORT, LIFTING	1	1	1					
9	1	1N3390-35400	COLLER,GUIDE	1	1	1					
10	1	1N3390-35450	COVER,LIFT	1	1	1					
11	1	1N3400-35500	SHAFT,IDLER	1	1	1					
12	1	22137-080000	WASHER, 8	8	8	8					
13	1	22137-080000	WASHER, 8	1	1	1					
14	1	22157-060000	WASHER, 6	1	1	1					
15	1	22157-080000	WASHER, 8	2	2	2					
16	1	22157-080000	WASHER, 8	2	2	2					
17	1	22217-060000	WASHER, SPRING 6	1	1	1					
18	1	22217-080000	WASHER, SPRING 8	2	2	2					
19	1	22272-000060	RING, E- 6	1	1	1					
20	1	22417-160100	COTTER PIN	1	1	1					
21	1	22417-200160	PIN, COTTER 2.0X16	3	3	3					
22	1	22487-060160	PIN, H 6X 16	1	1	1					
23	1	22487-080120	PIN, H 8X 12	1	1	1					
24	1	22487-080160	PIN, H 8X 16	2	2	2					
25	1	26018-080202	BOLT, M8X 20	3	3	3					
26	1	26018-080204	BOLT M 8X 20	2	2	2					
27	1	26051-080002	NUT, M8	8	8	8					
28	1	26116-080202	BOLT, M8X 20 PLATED	8	8	8					
29	1	26116-080252	BOLT, M8X 25 PLATED	2	2	2					
30	1	26117-060122	BOLT M 6X 12 PLATED	1	1	1					
31	1	26347-080002	NUT, M8	2	2	2					
32	1	26557-060252	SCREW, M6X25	2	2	2					

Fig.15. CHASSIS FRAME

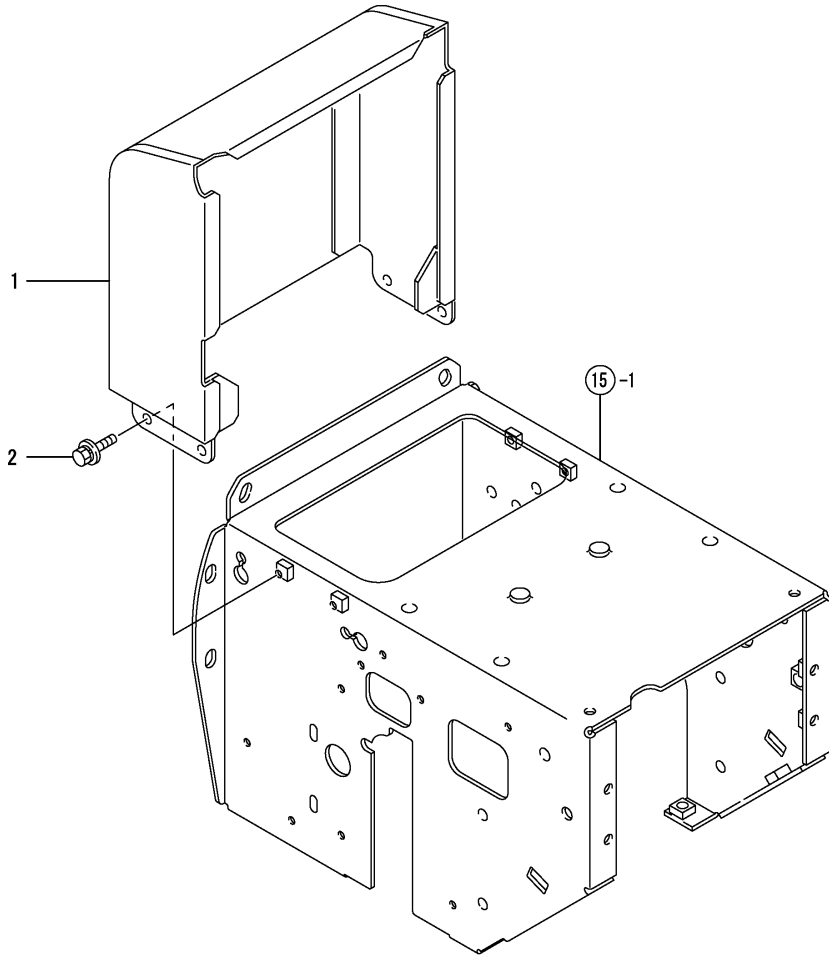


(A)=YSR90H
(B)=YSR90H-S
(C)=YSR100H-S

(D)=
(E)=
(F)=

No.	Lev.	Parts No.	Description	Qty						I	R
				(A)	(B)	(C)	(D)	(E)	(F)		
1	1	1N3415-36010	CHASSIS	1	1	1					
2	1	1N3405-36100	CHASSIS	1	1	1					
3	1	1N3021-36130	GROMMET	1	1	1					
4	1	1N3370-36200	CHASSIS,BOTTOM	1	1	1					
5	1	26018-080164	BOLT M 8X 16	2	2	2					
6	1	26018-080164	BOLT M 8X 16	6	6	6					
7	1	26018-080204	BOLT M 8X 20	2	2	2					
8	1	1N3021-36401	BRACKET,TRANSM.MTG.	1	1	1					
9	1	1N3405-36600	STAY,TANK	1	1	1					
10	1	1N3360-36650	MOUNT, STAY	1	1	1					
11	1	22137-060000	WASHER, 6	4	4	4					
12	1	22157-080000	WASHER, 8	4	4	4					
13	1	26016-080202	BOLT, M8X 20	4	4	4					
14	1	26018-080202	BOLT, M8X 20	4	4	4					
15	1	26051-060002	NUT, M6	2	2	2					
16	1	26117-060162	BOLT M 6X 16 PLATED	2	2	2					
17	1	26117-060252	BOLT M 6X 25 PLATED	2	2	2					
18	1	26347-060002	NUT, M6	2	2	2					

Fig.16. BELT COVER



(A)=YSR90H
(B)=YSR90H-S
(C)=YSR100H-S

(D)=
(E)=
(F)=

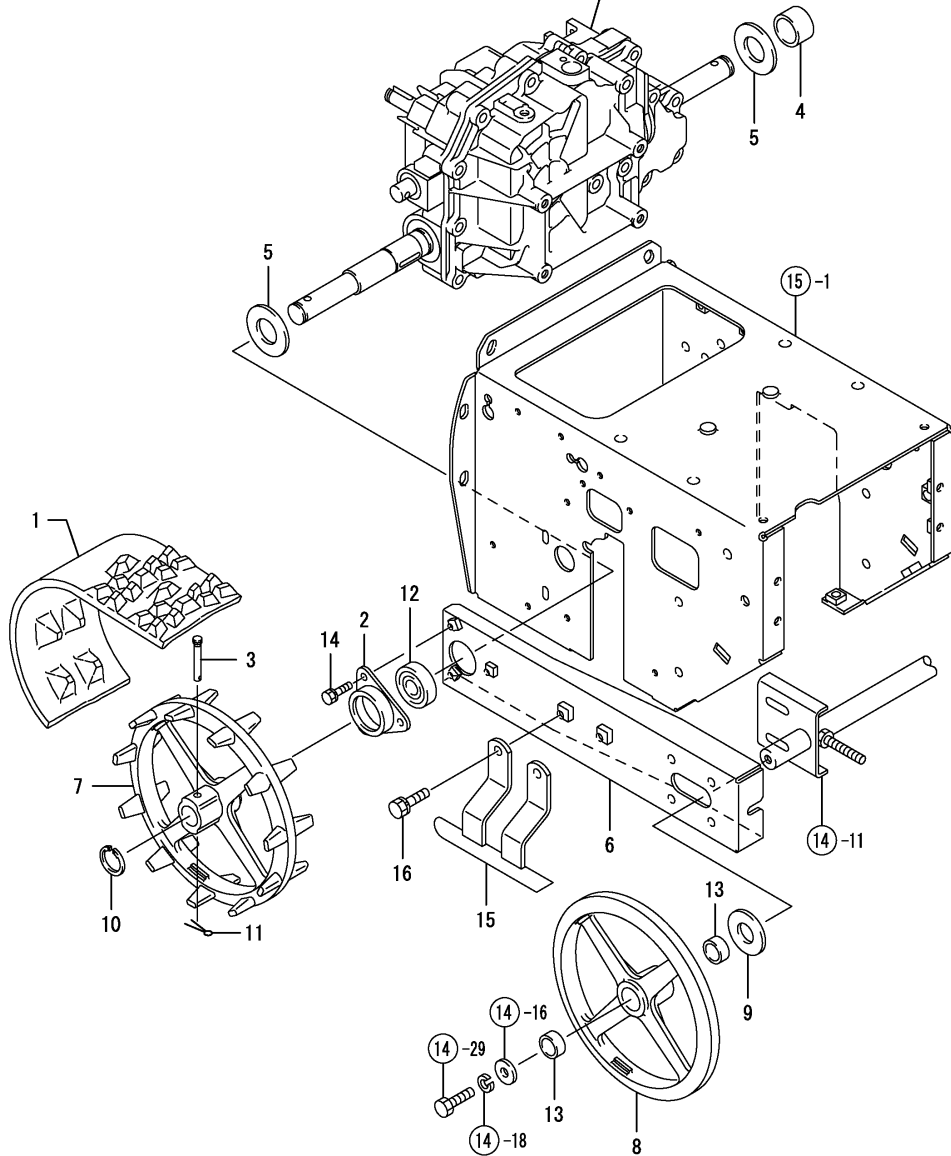
No.	Lev.	Parts No.	Description	Qty						I	R	
				(A)	(B)	(C)	(D)	(E)	(F)			
1	1	7N3405-37010	PL,ASSY,BELT COVER	1	1	1						
2	1	26018-060124	BOLT M 6X 12	4	4	4						

Fig.17. CRAWLER

(A)=YSR90H
 (B)=YSR90H-S
 (C)=YSR100H-S

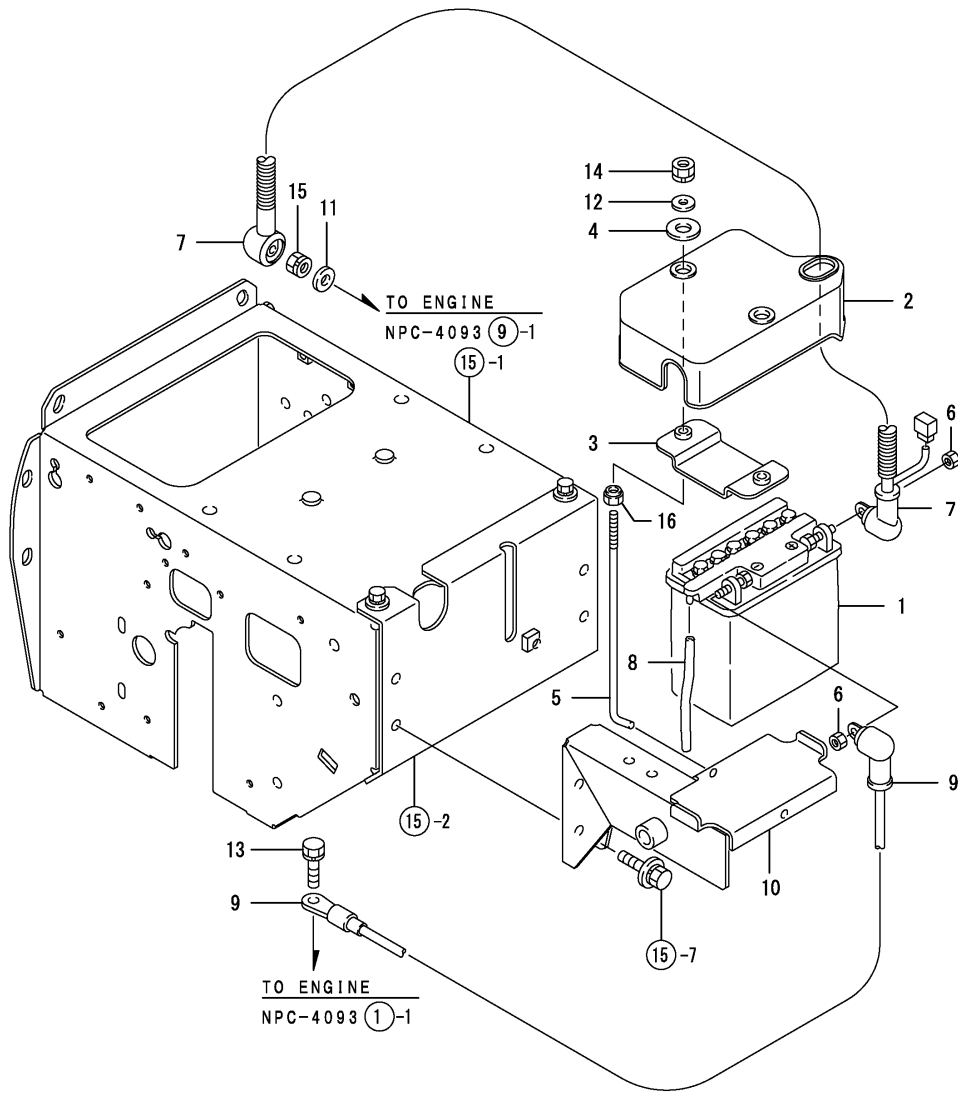
(D)=
 (E)=
 (F)=

TRANSMISSION ASSY. (IHT)
 REFER TO FIG. 30



No.	Lev.	Parts No.	Description	Qty						I	R
				(A)	(B)	(C)	(D)	(E)	(F)		
1	1	1N3360-38000	CRAWLER	2	2	2					
2	1	1N3300-25100	JOINT 6004	2	2	2					
3	1	1N3021-38101	PIN,AXLE	2	2	2					
4	1	1N3021-38150	COLLAR 16X32X19	1	1	1					
5	1	1N3021-38170	WASHER,SEAL PROTECT.	2	2	2					
6	1	1N3390-38200	FRAME,CRAWLER	2	2	2					
7	1	1N3021-38500	SPROCKET 11	2	2	2					
8	1	1N3021-38600	WHEEL	2	2	2					
9	1	22137-200000	WASHER, 20	2	2	2					
10	1	22292-000200	RING, S-20	2	2	2					
11	1	22417-200120	COTTER PIN 2.0X12	2	2	2					
12	1	24104-060044	BEARING, BALL 6004UU	2	2	2					
13	1	24550-020100	BUSH, 20X10	4	4	4					
14	1	26016-060162	BOLT, M6X 16	6	6	6					
15	1	1N3370-38500	GUIDE,CRAWLER	2	2	2					
16	1	26016-080202	BOLT, M8X 20	4	4	4					

Fig.18. BATTERY



(A)=YSR90H
 (B)=YSR90H-S
 (C)=YSR100H-S

(D)=
 (E)=
 (F)=

No.	Lev.	Parts No.	Description	Qty						I	R
				(A)	(B)	(C)	(D)	(E)	(F)		
1	1	1N3300-51010	BATTERY YB12AL-A		1	1					
2	1	1N3360-51100	COVER, BATTERY		1	1					
3	1	1N3360-51150	PLATE, KEEP, BATTERY		1	1					
4	1	1N3360-51170	RUBBER, KEEP, BATTERY		2	2					
5	1	1N3360-51200	SHAFT, KEEP, BATTERY		2	2					
6	1	1N3360-51210	NUT 6X7		2	2					
7	1	1N3370-51300	CABLE, BATTERY POSIT.		1	1					
8	1	1N1710-51350	PIPE, VINYL		1	1					
9	1	1N3370-51350	CABLE, BATTERY NEG.		1	1					
10	1	1N3370-51500	REST ASSY, BATTERY	1	1	1					
11	1	22117-080000	WASHER, 8		1	1					
12	1	22157-060000	WASHER, 6		2	2					
13	1	26016-080164	BOLT M 8X 16		1	1					
14	1	26051-060002	NUT, M6		2	2					
15	1	26051-080002	NUT, M8		1	1					
16	1	26347-060002	NUT, M6		2	2					

Fig.19. HARNESS & SWITCH

(A)=YSR90H
 (B)=YSR90H-S
 (C)=YSR100H-S

(D)=
 (E)=
 (F)=

No.	Lev.	Parts No.	Description	Q'ty						I	R
				(A)	(B)	(C)	(D)	(E)	(F)		
1	1	1J3999-07000	BAND 100B	1							
2	1	1N3300-51400	HARNESS (T	1							
3	1	1E6102-84970	BAND 140,WIRE LOCK	2							
4	1	1A1470-40900	SWITCH,STOP	1							
5	1	1N3300-51451	SEAT,SWICH T	1							
6	1	26018-080164	BOLT M 8X 16	2							
7	1	26051-080002	NUT, M8	1							

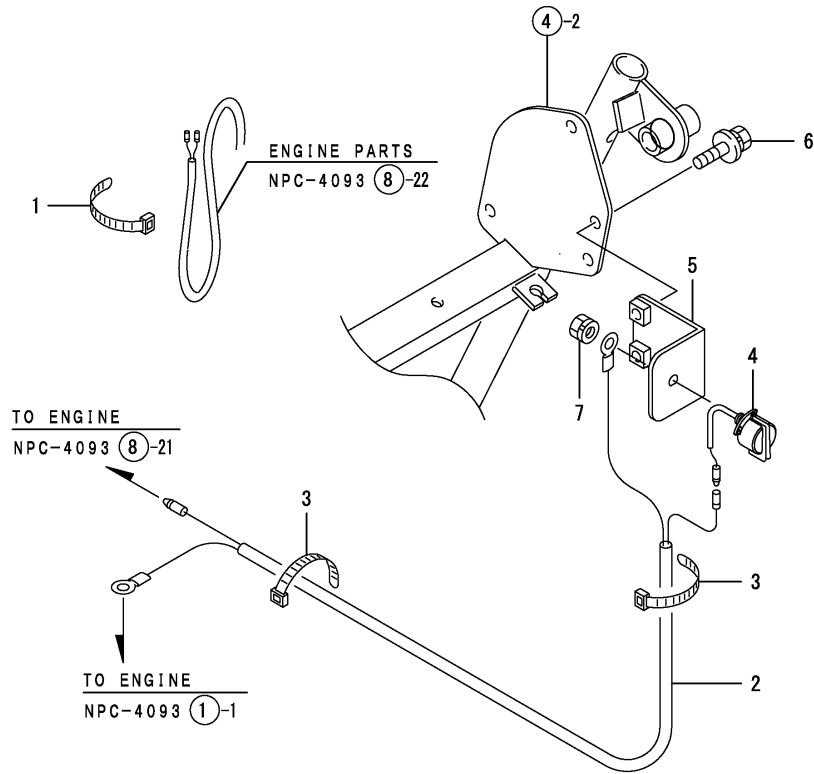
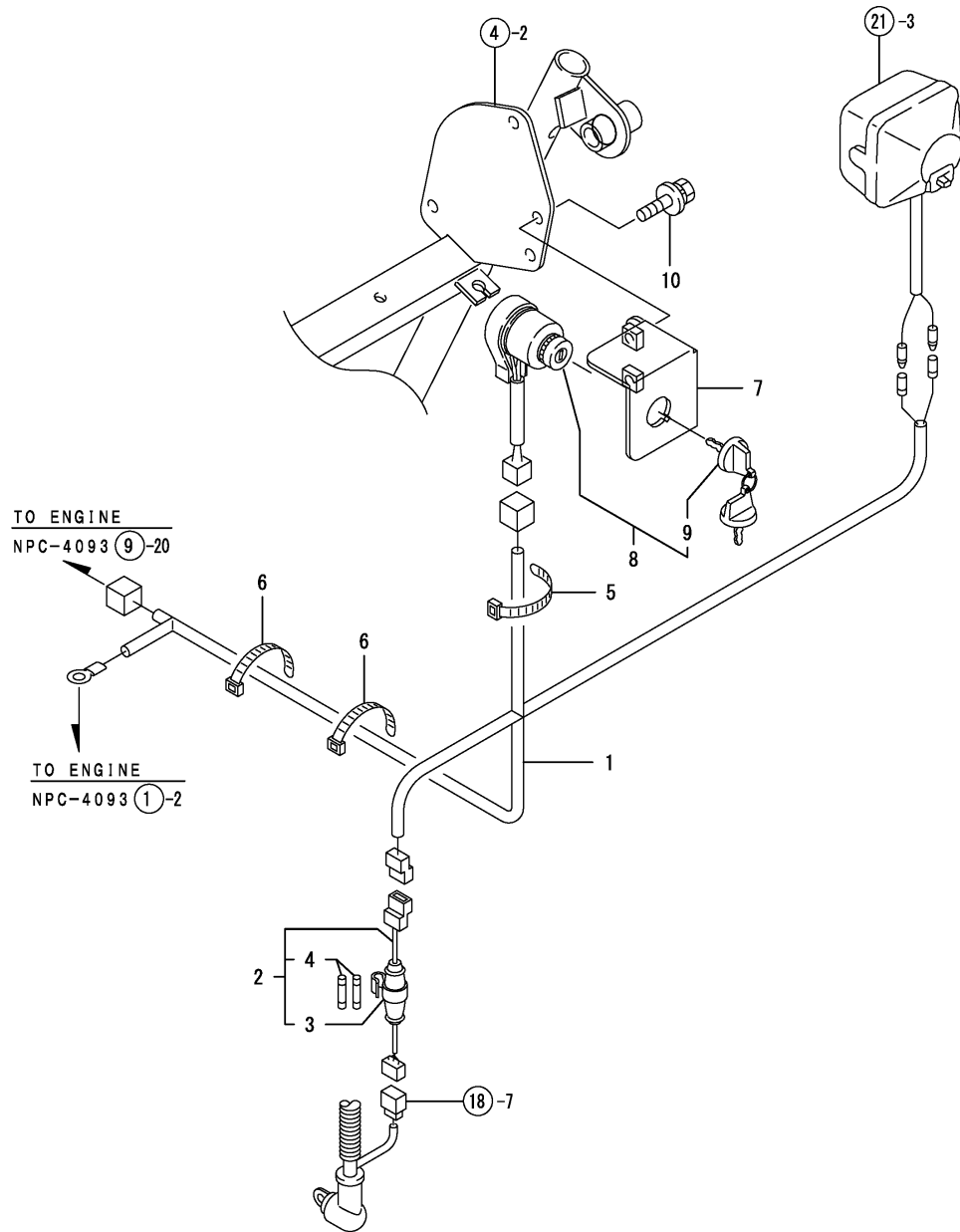


Fig.20. HARNESS & SWITCH

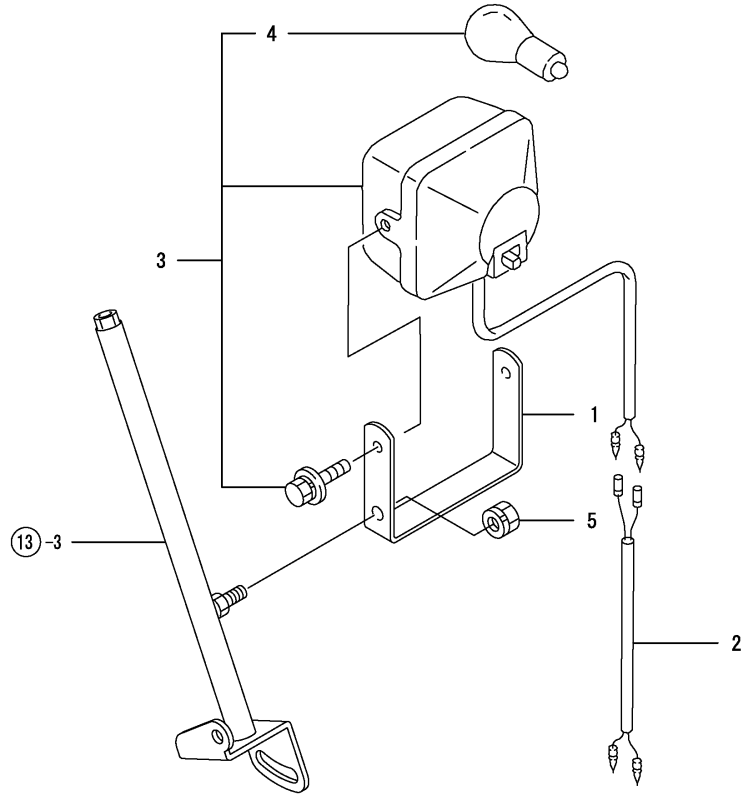


(A)=YSR90H
 (B)=YSR90H-S
 (C)=YSR100H-S

(D)=
 (E)=
 (F)=

No.	Lev.	Parts No.	Description	Q'ty						I	R
				(A)	(B)	(C)	(D)	(E)	(F)		
1	1	1N3405-51000	HARNESS		1	1					
2	1	1N3021-51550	HOLDER ASSY.,FUSE		1	1					
3	2	1N3021-51560	HOLDER, FUSE		1	1					
4	2	29411-200000	FUSE, CARTRIDGE 20A		2	2					
5	1	1E6102-84960	BAND 250,WIRE LOCK		2	2					
6	1	1E6102-84970	BAND 140,WIRE LOCK		3	3					
7	1	1N3300-51552	SEAT, SWITCH TS		1	1					
8	1	1N3021-52300	SWITCH ASSY.,KEY		1	1					
9	2	160797-77270	KEY, REVERSE		1	1					
10	1	26018-080164	BOLT M 8X 16		2	2					

Fig.21. LAMP

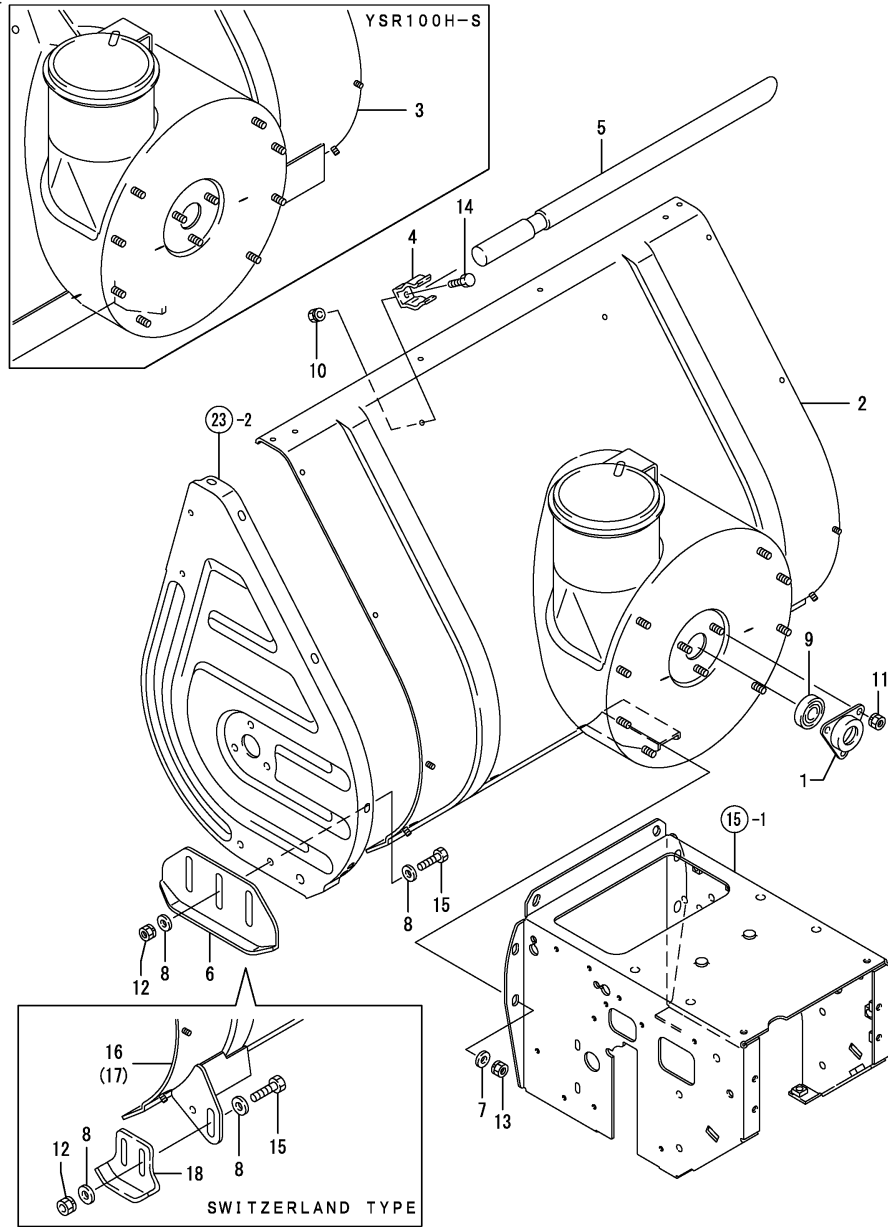


(A)=YSR90H
 (B)=YSR90H-S
 (C)=YSR100H-S

(D)=
 (E)=
 (F)=

No.	Lev.	Parts No.	Description	Q'ty						I	R
				(A)	(B)	(C)	(D)	(E)	(F)		
1	1	1N3400-51450	STAY,LIGHT	1	1	1					
2	1	1N3300-51480	HARNES, LAMP	1							
3	1	1N1711-51850	HEADLIGHT COMPL.	1	1	1					
4	2	1N1711-51860	LAMP 12V-15W G23	1	1	1					
5	1	26051-080002	NUT, M8	1	1	1					

Fig.22. SNOW REMOVING FRAME



(A)=YSR90H
(B)=YSR90H-S
(C)=YSR100H-S

(D)=
(E)=
(F)=

No.	Lev.	Parts No.	Description	Qty						I	R
				(A)	(B)	(C)	(D)	(E)	(F)		
1	1	1N1570-38210	BEARING 6203B	1	1	1					
2	1	7N3405-71000	PL.ASSY,WORK FRAME	1	1						
3	1	7N3415-71000	PL.ASSY,WORK FRAME			1					
4	1	1N1710-71062	STOPPER	2	2	2					
5	1	1N1710-71071	ROD,SNOW SHOVELING	1	1	1					
5-1	1	1N1710-71072	ROD,SNOW SHOVELING	1	1	1					R
		(A=FXXXXXX)	(B=FXXXXXX)	(C=FXXXXXX)							
6	1	1N3300-71401	SHOE	2	2	2					2
7	1	22137-080000	WASHER, 8	6	6	6					
8	1	22137-080000	WASHER, 8	8	8	8					
9	1	24104-062034	BEARING, BALL 6203UU	1	1	1					
10	1	26051-060002	NUT, M6	2	2	2					
11	1	26051-080002	NUT, M8	3	3	3					
12	1	26051-080002	NUT, M8	4	4	4					
13	1	26051-080002	NUT, M8	6	6	6					
14	1	26117-060122	BOLT M 6X 12 PLATED	2	2	2					
15	1	26117-080202	BOLT M 8X 20 PLATED	4	4	4					
16	1	7N3405-71010	PL.ASSY,WORK FRAME	1	1						1
17	1	7N3415-71010	PL.ASSY,WORK FRAME			1					1
18	1	1N1711-71100-1	GUIDE	2	2	2					1

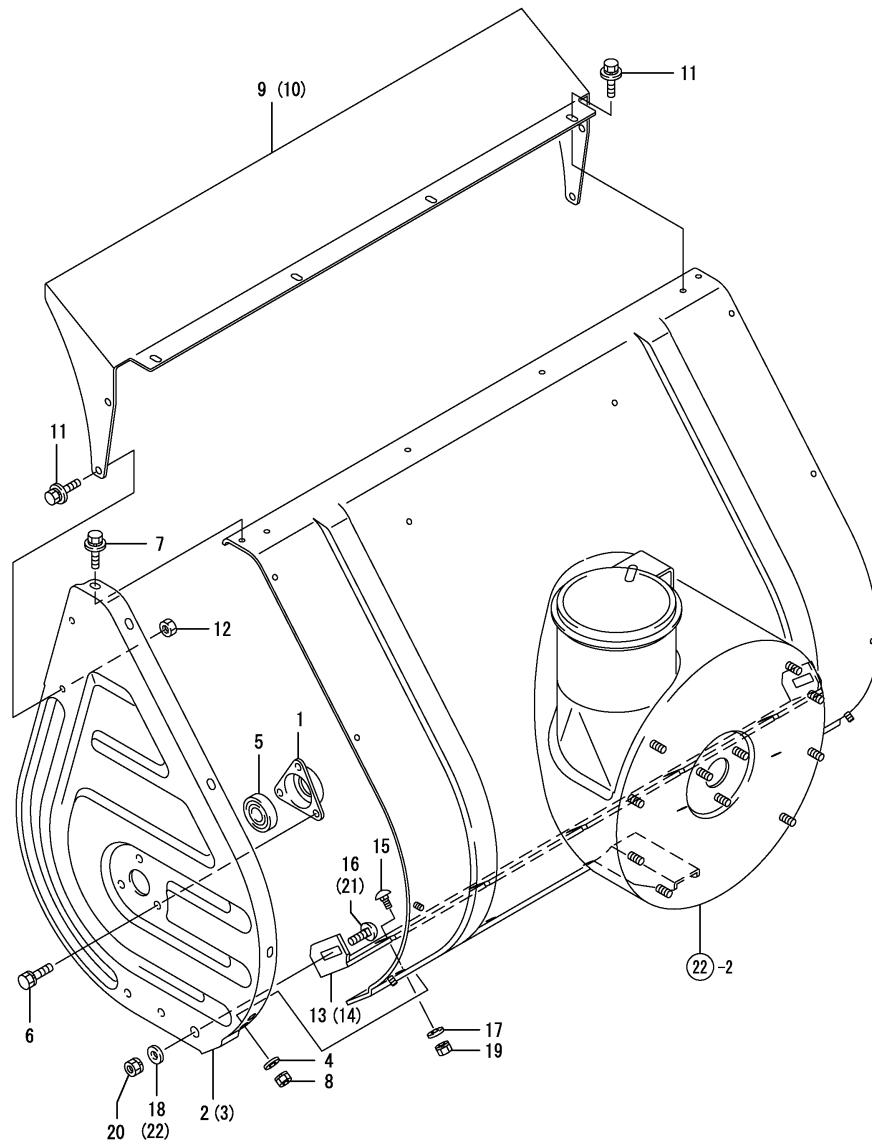
Remarks

- (1) FOR TYPE SWITZERLAND
- (2) NOT USED FOR SWITZERLAND TYPE

Fig.23. AUGER COVER

(A)=YSR90H
(B)=YSR90H-S
(C)=YSR100H-S

(D)=
(E)=
(F)=

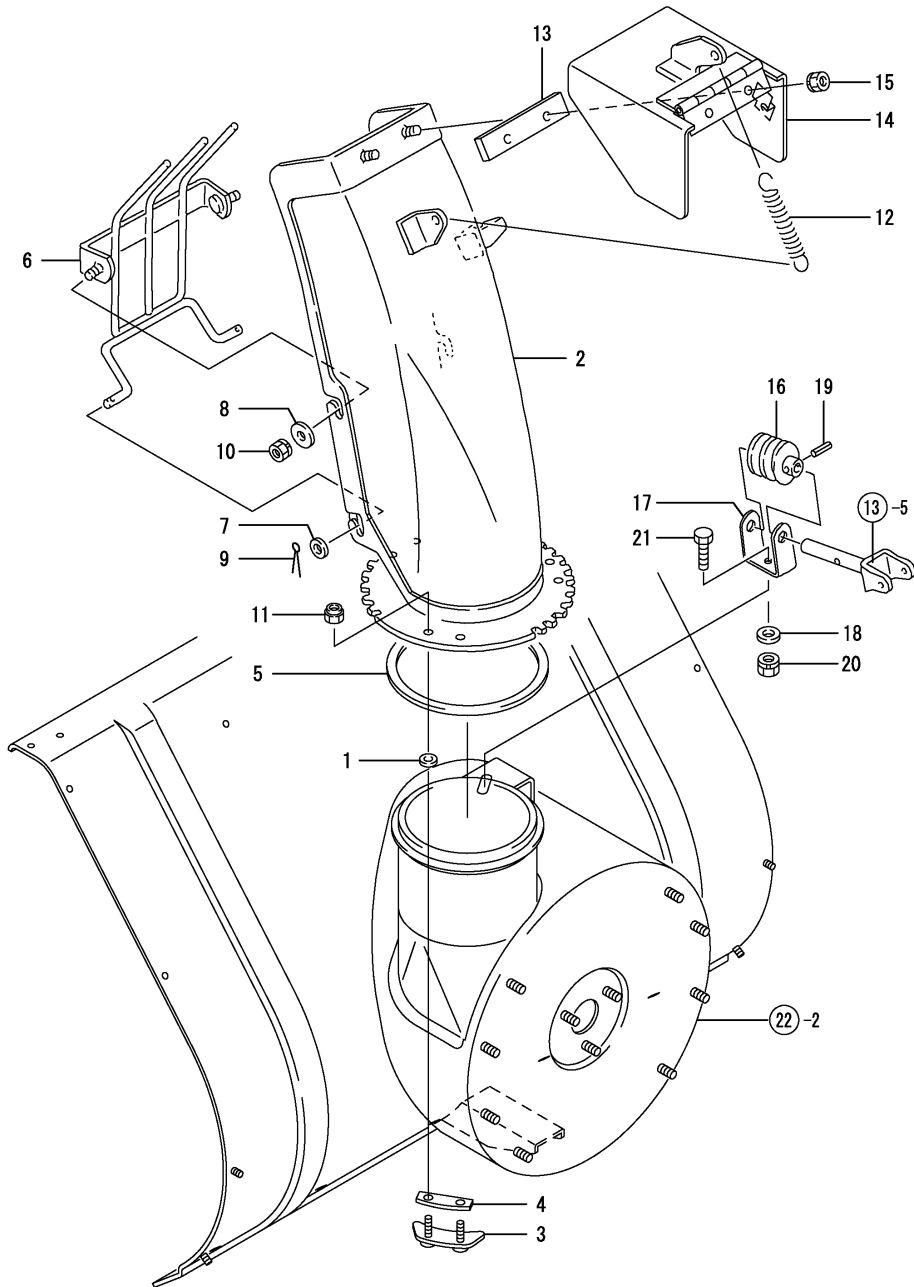


No.	Lev.	Parts No.	Description	Qty						I	R
				(A)	(B)	(C)	(D)	(E)	(F)		
1	1	1N1570-38200	BEARING 6203C	2	2	2					
2	1	1N3370-71300	PLATE L,AUGER SIDE	1	1	1					
3	1	1N3370-71350	PLATE R,AUGER SIDE	1	1	1					
4	1	22137-060000	WASHER, 6	4	4	4					
5	1	24104-062034	BEARING, BALL 6203UU	2	2	2					
6	1	26016-080164	BOLT M 8X 16	6	6	6					
7	1	26018-060124	BOLT M 6X 12	6	6	6					
8	1	26051-060002	NUT, M6	4	4	4					
9	1	1N3269-71500	COVER 710,AUGER CASE	1	1						
10	1	1N3021-71500	COVER,AUGER CASE							1	
11	1	26018-060124	BOLT M 6X 12	8	8	8					
12	1	26717-060002	NUT, M6	4	4	4					
13	1	1N3300-71301	PLATE,BOTTOM(710	1	1						
14	1	1N3020-71301	PLATE,BOTTOM(800							1	
15	1	1N3300-71320	BOLT	5	5	5					
16	1	1N3300-71330	BOLT	2	2	2					2
17	1	22137-060000	WASHER, 6	5	5	5					
18	1	22157-080000	WASHER, 8	2	2	2					2
19	1	26051-060002	NUT, M6	5	5	5					
20	1	26051-080002	NUT, M8	2	2	2					
21	1	1N3020-71320	BOLT, 8X20	2	2	2					1
22	1	22137-080000	WASHER, 8	2	2	2					1

Remarks

- (1) FOR TYPE SWITZERLAND
- (2) NOT USED FOR SWITZERLAND TYPE

Fig.24. CHUTE

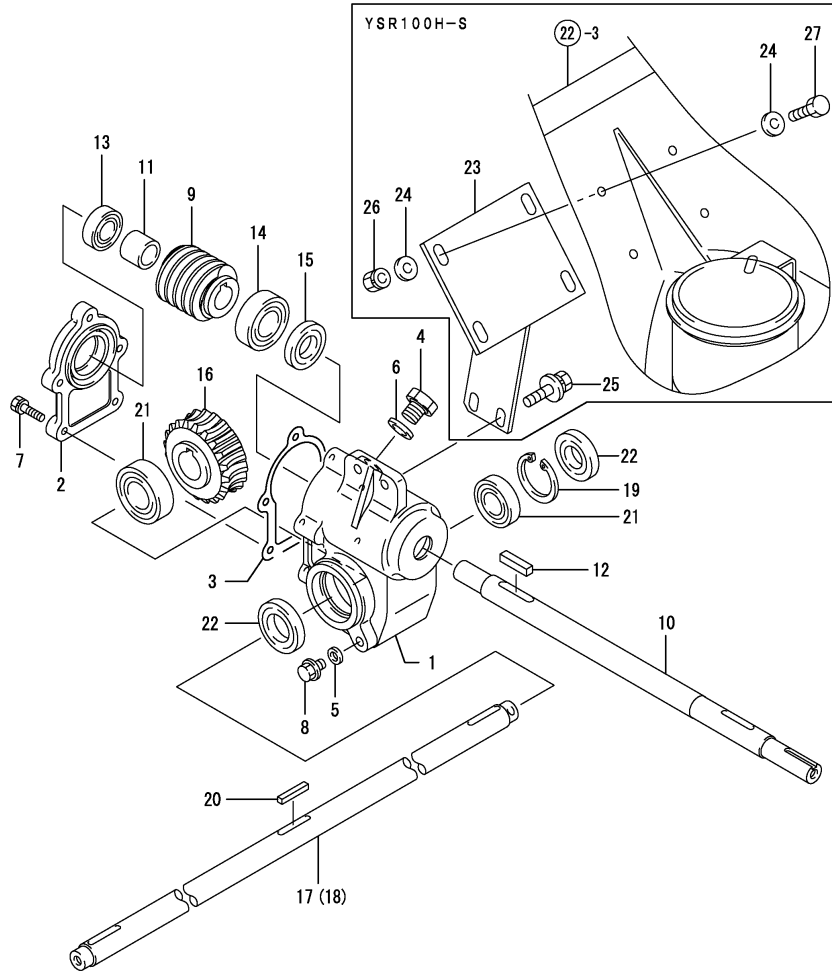


(A)=YSR90H
(B)=YSR90H-S
(C)=YSR100H-S

(D)=
(E)=
(F)=

No.	Lev.	Parts No.	Description	Qty						I	R
				(A)	(B)	(C)	(D)	(E)	(F)		
1	1	1J3999-02160	WASHER	6	6	6					
2	1	7N3390-73000	PL.ASSY,CHUTE	1	1	1					
3	1	1N3021-73201	FIXTURE A,SHOOTER	3	3	3					
4	1	1N1711-73240	SPACER	3	3	3					
5	1	1N1711-73280	PLATE,FLOOR	1	1	1					
6	1	1N1960-73502	GUARD	1	1	1					
7	1	22137-060000	WASHER, 6	2	2	2					
8	1	22157-060000	WASHER, 6	2	2	2					
9	1	22417-200120	COTTER PIN 2.0X12	2	2	2					
10	1	26051-060002	NUT, M6	2	2	2					
11	1	26347-060002	NUT, M6	6	6	6					
12	1	1N1570-73150	SPRING,CHUTE	1	1	1					
13	1	1N1711-73170	RUBBER,SNOW PROTECT.	1	1	1					
14	1	1N3300-73202	DEFLECTOR, CHUTE 9W	1	1	1					
15	1	26051-060002	NUT, M6	2	2	2					
16	1	1N3390-73300	WORM,3X3L	1	1	1					
17	1	1N3390-73350	BEAKING,WORM	1	1	1					
18	1	22137-080000	WASHER, 8	1	1	1					
19	1	22351-050020	PIN, SPRING 5.0X20	1	1	1					
20	1	26051-080002	NUT, M8	1	1	1					
21	1	26117-080162	BOLT M 8X 16 PLATED	1	1	1					

Fig.25. GEAR CASE



(A)=YSR90H
(B)=YSR90H-S
(C)=YSR100H-S

(D)=
(E)=
(F)=

No.	Lev.	Parts No.	Description	Q'ty						I	R
				(A)	(B)	(C)	(D)	(E)	(F)		
1	1	1N3370-74000	CASE,SNOW REMV.GEAR	1	1	1					
2	1	1N3021-74010	COVER,SNOW RMV.GR.CS	1	1	1					
3	1	1N3021-74020	PACKING,SNOW RMV.CS.	1	1	1					
4	1	1N3021-74130	BOLT M14,DRAIN	1	1	1					
5	1	22190-080000	WASHER, SEAL 8	1	1	1					
6	1	22190-140000	WASHER, SEAL 14	1	1	1					
7	1	26016-060252	BOLT, M6X 25	5	5	5					
8	1	26107-080162	BOLT M 8X 16 PLATED	1	1	1					
9	1	1N3021-74030	WORM 3L2	1	1	1					
10	1	1N3370-74050	SHAFT,BLOWER	1	1	1					
11	1	1N3021-74080	COLLAR 18X25X20.5	1	1	1					
12	1	22550-070300	KEY 7X30	1	1	1					
13	1	24101-060034	BEARING, BALL 6003	1	1	1					
14	1	24101-060044	BEARING, BALL 6004	1	1	1					
15	1	24421-203508	SEAL, OIL TC203508	1	1	1					
16	1	1N3370-74040	WHEEL 3X20,WORM	1	1	1					
17	1	1N3370-74200	SHAFT 710,AUGER	1	1						
18	1	1N3410-74200	SHAFT,AUGER 800							1	
19	1	22252-000420	RING, 42	1	1	1					
20	1	22550-050300	KEY 5X30	1	1	1					
21	1	24101-060044	BEARING, BALL 6004	2	2	2					
22	1	24421-204208	SEAL, OIL TC204208	2	2	2					
23	1	1N3021-74200	FIXTURE,GEAR CASE							1	
24	1	22137-080000	WASHER, 8							8	
25	1	26018-080202	BOLT, M8X 20							2	
26	1	26051-080002	NUT, M8							4	
27	1	26117-080202	BOLT M 8X 20 PLATED							4	

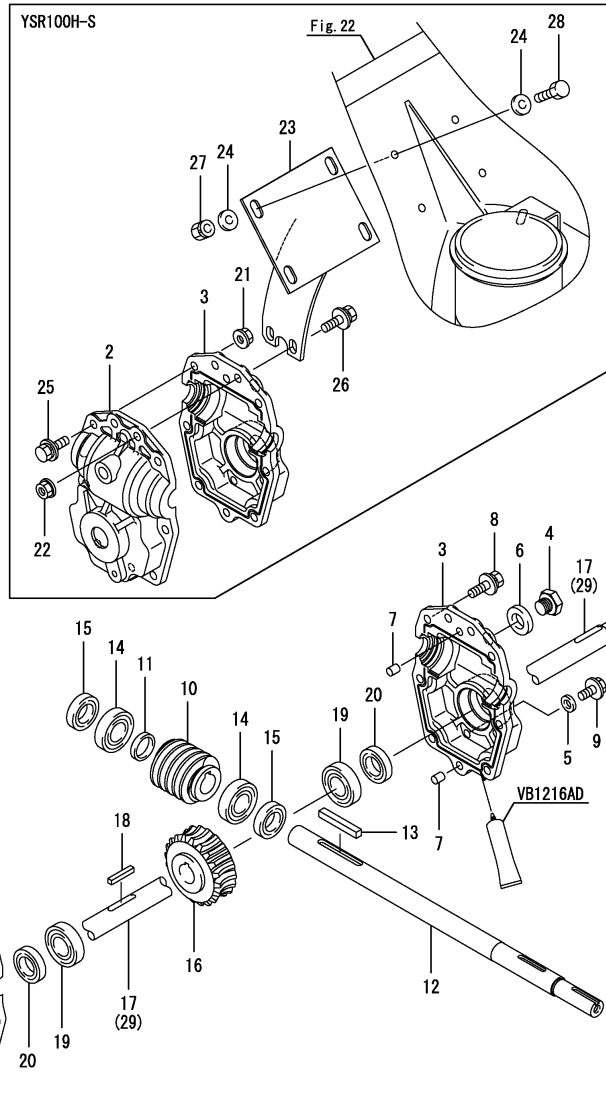
Remarks

*This item is applicable to [(A)(B)=F011149(C)=F010906] or previous machines. Refer to Fig.31.

Fig.31. (25A)GEAR CASE

(A)=YSR90H
 (B)=YSR90H-S
 (C)=YSR100H-S

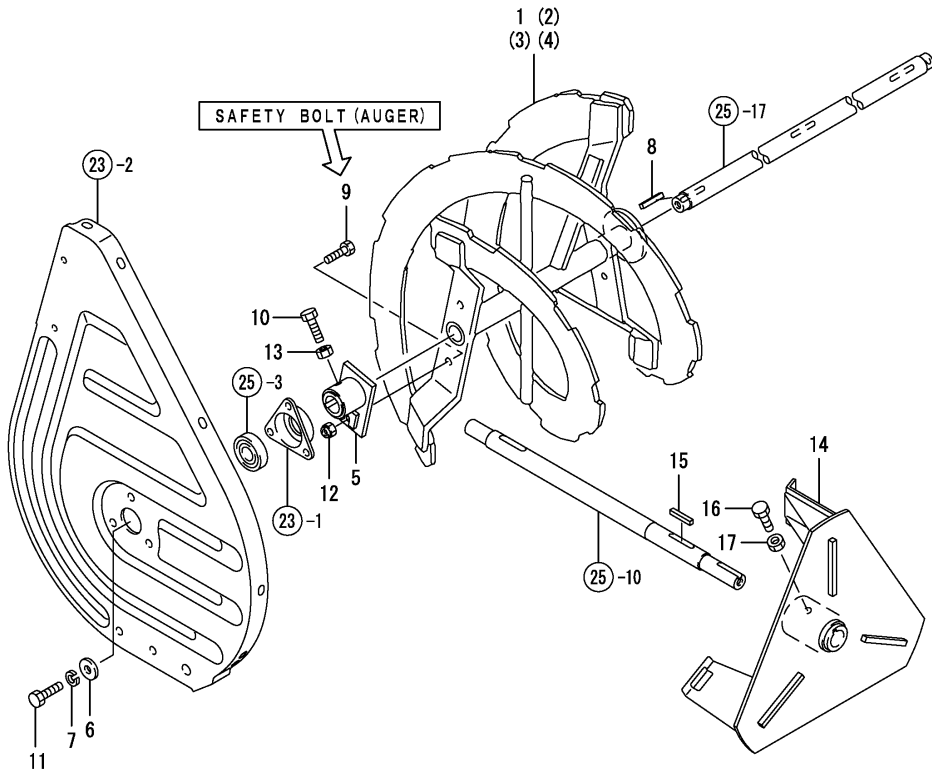
(D)=
 (E)=
 (F)=



No.	Lev.	Parts No.	Description	Q'ty						I	R
				(A)	(B)	(C)	(D)	(E)	(F)		
1	1	194990-22140	NUT, M8	8	8						
2	1	1N3790-74000	CASE L, GEAR	1	1	1					
3	1	1N3790-74010	CASE R, GEAR	1	1	1					
4	1	1N3910-74130	BOLT, DRAIN	1	1						
5	1	22190-080000	WASHER, SEAL 8	1	1	1					
6	1	22190-140000	WASHER, SEAL 14	1	1	1					
7	1	22312-080100	PIN, PARALLEL M8X10	2	2	2					
8	1	26014-080302	BOLT, M8X 30	8	8						
9	1	26107-080162	BOLT,8X 16	1	1	1					
10	1	1N3021-74030	WORM 3L2	1	1	1					
11	1	1N3790-74080	COLLAR, 21X27X5	1	1	1					
12	1	1N3405-74100	SHAFT, BLOWER	1	1	1					
13	1	22550-070500	KEY 7X50	1	1	1					
14	1	24101-060044	BEARING, BALL 6004	2	2	2					
15	1	24421-203508	SEAL, OIL TC203508	2	2	2					
16	1	1N3370-74040	WHEEL 3X20,WORM	1	1	1					
17	1	1N3370-74200	SHAFT 710,AUGER	1	1						
18	1	22550-050300	KEY 5X30	1	1	1					
19	1	24101-060044	BEARING, BALL 6004	2	2	2					
20	1	24421-203508	SEAL, OIL TC203508	2	2	2					
21	1	194990-22140	NUT, M8							6	
22	1	194990-22140	NUT, M8							2	
23	1	1N3790-74200	FIXTURE, GEAR CASE							1	
24	1	22137-080000	WASHER, 8							8	
25	1	26014-080302	BOLT, M8X 30							6	
26	1	26014-080352	BOLT, M8X 35							2	
27	1	26051-080002	NUT, M8							4	
28	1	26116-080202	BOLT, M8X 20 PLATED							4	
29	1	1N3410-74200	SHAFT,AUGER 800							1	

Remarks
 *This item is applicable to
 [(A)(B)=F011150(C)=F010907]
 or following machines.
 Refer to Fig.25.

Fig.26. AUGER & BLOWER

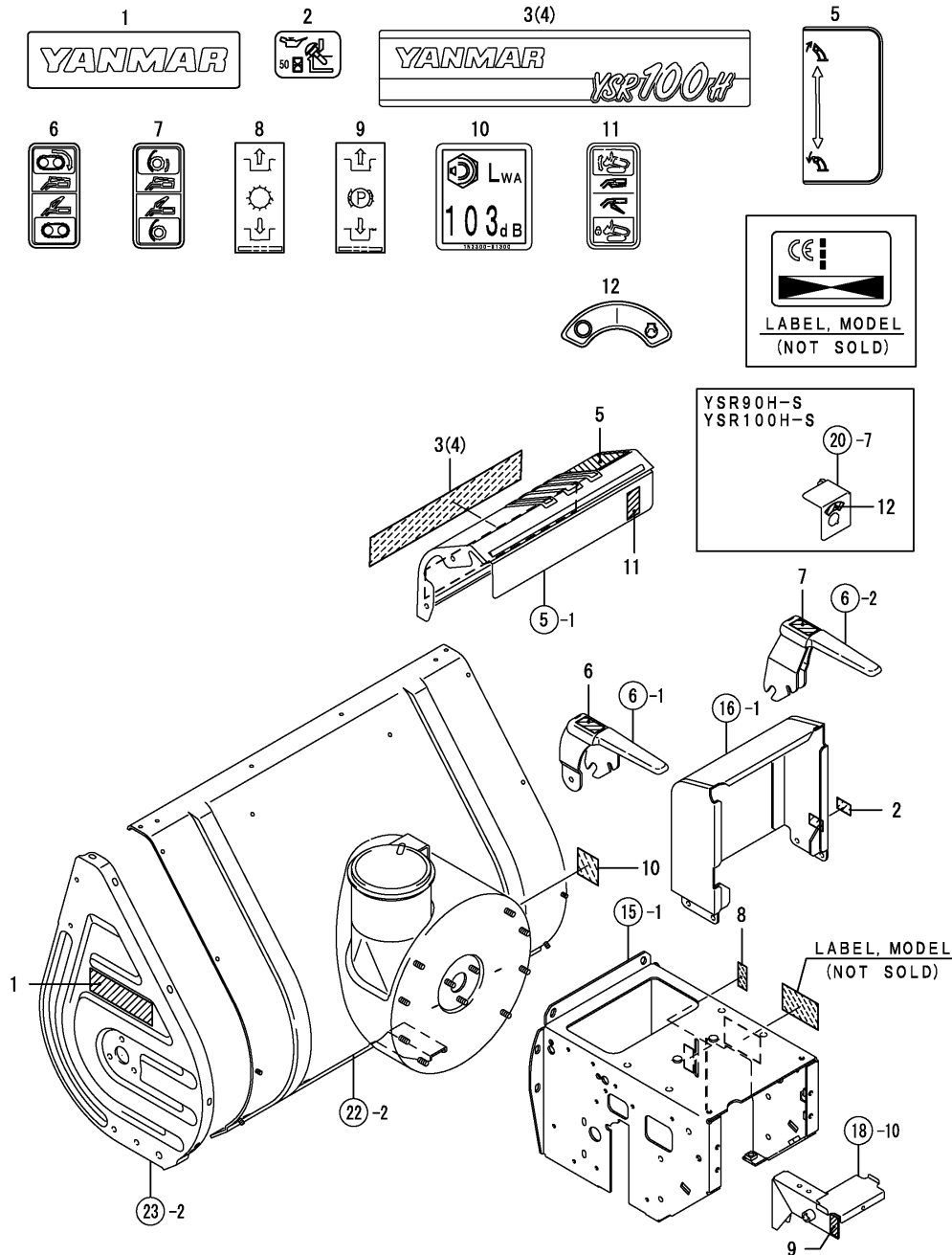


(A)=YSR90H
(B)=YSR90H-S
(C)=YSR100H-S

(D)=
(E)=
(F)=

No.	Lev.	Parts No.	Description	Q'ty						I	R
				(A)	(B)	(C)	(D)	(E)	(F)		
1	1	1N3370-75000	AUGER, L 710	1	1						
2	1	1N3370-75100	AUGER, R 710	1	1						
3	1	1N3410-75000	AUGER,L(800)						1		
4	1	1N3410-75100	AUGER,R(800)						1		
5	1	1N3330-75200	FLANGE,AUGER	2	2	2					
6	1	22157-080000	WASHER, 8	2	2	2					
7	1	22217-080000	WASHER, SPRING 8	2	2	2					
8	1	22550-050300	KEY 5X30	2	2	2					
9	1	26116-060202	BOLT, M6X 20 PLATED	2	2	2					
10	1	26116-080162	BOLT, M8X 16 PLATED	2	2	2					
11	1	26116-080252	BOLT, M8X 25 PLATED	2	2	2					
12	1	26347-060002	NUT, M6	2	2	2					
13	1	26717-080002	NUT, M8	2	2	2					
14	1	1N3370-76000	BLOWER ASSY	1	1	1					
15	1	22550-050300	KEY 5X30	1	1	1					
16	1	26116-080202	BOLT, M8X 20 PLATED	1	1	1					
17	1	26717-080002	NUT, M8	1	1	1					

Fig.27. LABELS

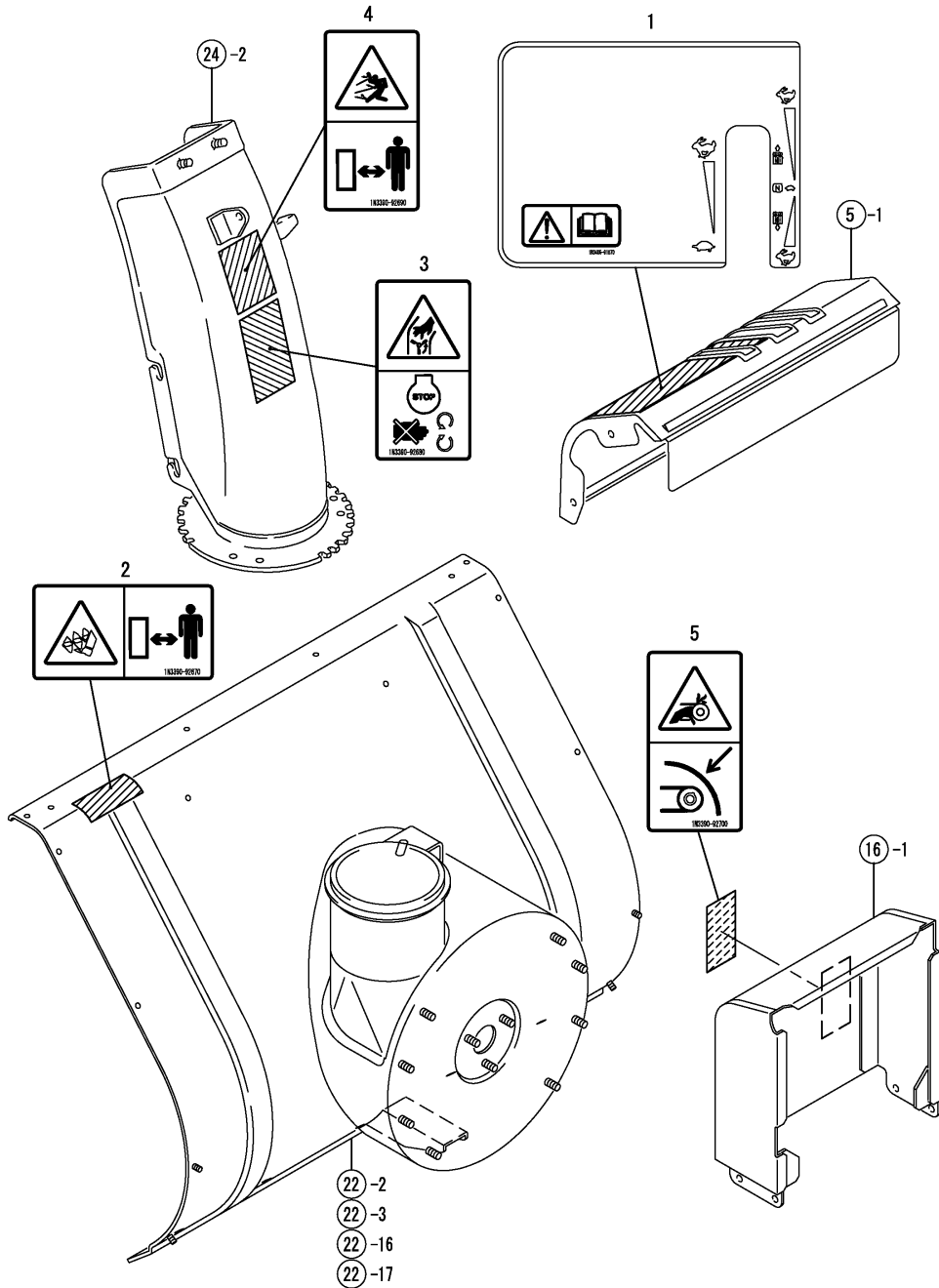


(A)=YSR90H
(B)=YSR90H-S
(C)=YSR100H-S

(D)=
(E)=
(F)=

No.	Lev.	Parts No.	Description	Qty						I	R
				(A)	(B)	(C)	(D)	(E)	(F)		
1	1	1N1711-68190	MARK C "YANMAR"	2	2	2					
2	1	1N1711-68220	MARK,OIL CHECK	1	1	1					
3	1	1N3405-91050	MARK,MODEL	1	1						
4	1	1N3415-91050	MARK,MODEL							1	
5	1	1N3390-91080	MARK	1	1	1					
6	1	1N3021-91100	MARK,TRAVEL CLUTCH	1	1	1					
7	1	1N3021-91110	MARK,SNOW REM.CLUTCH	1	1	1					
8	1	1N3405-91250	MARK	1	1	1					
9	1	1N3400-91260	MARK	1	1	1					
10	1	1N3300-91300	MARK, SOUND LEVEL	1	1	1					
11	1	1N3390-91300	MARK	1	1	1					
12	1	1N3390-91090	MARK,SWITCH			1	1				

Fig.28. LABELS (SAFETY)



(A)=YSR90H
(B)=YSR90H-S
(C)=YSR100H-S

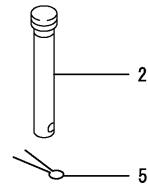
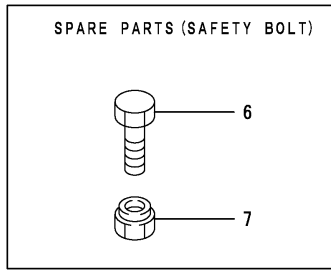
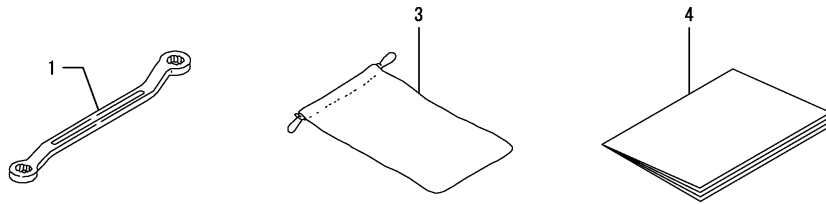
(D)=
(E)=
(F)=

No.	Lev.	Parts No.	Description	Q'ty						I	R
				(A)	(B)	(C)	(D)	(E)	(F)		
1	1	1N3405-91070	LABEL,CAUTION	1	1	1					
2	1	1N3390-92670	LABEL,DANGER	1	1	1					
3	1	1N3390-92680	LABEL,WARNING	1	1	1					
4	1	1N3390-92690	LABEL,WARNING	1	1	1					
5	1	1N3390-92700	LABEL,CAUTION	1	1	1					

Fig.29. TOOLS & ACCESSORIES

(A)=YSR90H
(B)=YSR90H-S
(C)=YSR100H-S

(D)=
(E)=
(F)=



No.	Lev.	Parts No.	Description	Q'ty						I	R
				(A)	(B)	(C)	(D)	(E)	(F)		
1	1	28160-100120	WRENCH, 10X12	1	1	1					
2	1	1N3021-38101	PIN,AXLE	2	2	2					
3	1	1F1150-92000	BAG,TOOL	1	1	1					
4	1	1N3390-96100	MANUAL, INSTRUCTION	1	1	1					
5	1	22417-200120	COTTER PIN 2.0X12	2	2	2					
6	1	26116-060202	BOLT, M6X 20 PLATED	10	10	10					1
7	1	26347-060002	NUT, M6	10	10	10					1

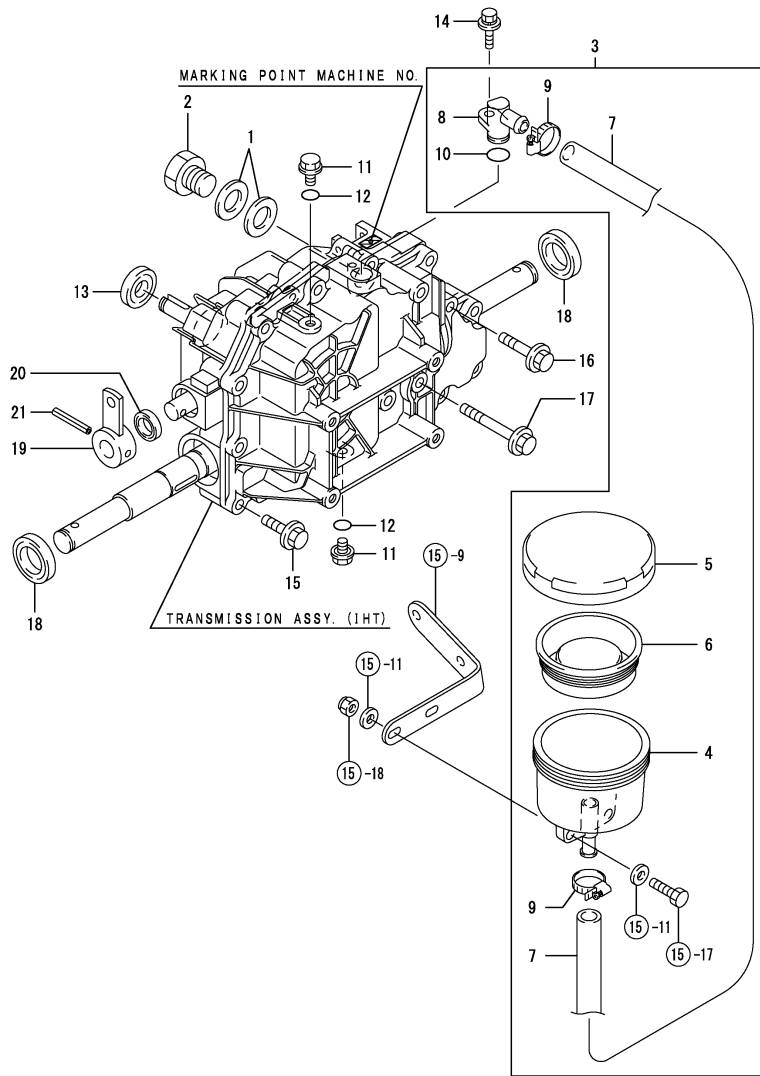
Remarks

(1) IT IS A SPARE PART FOR SAFETY BOLT, GROUP NO.26, REF. NO.9.

Fig.30. TRANSMISSION

(A)=YSR90H
 (B)=YSR90H-S
 (C)=YSR100H-S

(D)=
 (E)=
 (F)=



No.	Lev.	Parts No.	Description	Qty						I	R
				(A)	(B)	(C)	(D)	(E)	(F)		
1	1	23414-200026	GASKET, 20X1.0	2	2	2					
2	1	23887-200002	PLUG, 20	1	1	1					
3	1	1N3021-23040	SUB TANK KIT	1	1	1					
4	2	1N3021-23051	SUB TANK	1	1	1					
5	2	1N3021-23060	CAP, SUB-TANK	1	1	1					
6	2	1N3021-23070	DIAPHRAGM, SUB-TANK	1	1	1					
7	2	1N3021-23100	OIL HOSE	1	1	1					
8	2	194856-24920	BEND, SUCTION	1	1	1					
9	2	194856-24970	CLAMP, HOSE 25	2	2	2					
10	2	24311-000140	O-RING, 1AP14.0	1	1	1					
11	1	23491-080002	PLUG, 8	2	2	2					
12	1	24311-000090	O-RING, 1AP9.0	2	2	2					
13	1	24421-153507	SEAL, OIL TC153507	1	1	1					
14	1	26018-060162	BOLT, M6X 16	1	1	1					
15	1	26476-080302	SCREW, TAPPING M8X30	14	14	14					
16	1	26476-080402	SCREW, TAPPING M8X40	1	1	1					
17	1	26476-080652	SCREW, TAPPING M8X65	3	3	3					
18	1	24421-254208	SEAL, OIL TC254208	2	2	2					
19	1	1N3021-26050	LEVER ASSY, CONTROL	1	1	1					
20	1	194065-27270	SEAL, OIL TC16266	1	1	1					
21	1	22351-060040	PIN, SPRING 6.0X40	1	1	1					

Remarks

NOTE: A MACHINE IN WHICH THE TRANSMISSION UNIT IS PUT INTO EFFECT BEARS THE STAMPED NUMBER TO INDICATE THIS GROUP NO.

*P/#7N3021-20030, TRANSMISSION (IHT)

ASSY.:
 (PARTS OTHER THAN THOSE ILLUSTRATED CAN NOT BE DISASSEMBLED.)

Parts No. Index

Parts No.	Fig. No.	Ref. No.
160797-77270	20	9
194065-27270	30	20
194080-58820	1	7
194273-47910	1	24
194856-24920	30	8
194856-24970	30	9
194990-22140	31	1
		21
		22
1A1140-58050	12	5
1A1470-40900	19	4
1C1011-45020	7	20
1C6320-64680	8	6
	12	7
1C6560-92610	11	3
1E4760-43090	9	7
		8
	10	11
1E5100-51430	10	12
1E6102-84960	20	5
1E6102-84970	19	3
	20	6
1E6570-64760	8	7
1E6680-64240	12	6
1E6740-64200	9	10
1F1150-92000	29	3
1F5300-43300	13	11
1J3999-02010	1	5
	11	1
1J3999-02160	24	1
1J3999-06000	7	12
1J3999-07000	7	1
	12	1
	19	1
1N1570-32950	9	6
1N1570-38200	23	1
1N1570-38210	22	1
1N1570-51130	1	25
1N1570-73150	24	12
1N1710-32600	1	6
	7	7
1N1710-51350	18	8
1N1710-71062	22	4
1N1710-71071	22	5
1N1710-71072	22	5 -1
1N1710-82140	4	3
1N1711-35520	13	10
1N1711-51850	21	3
1N1711-51860	21	4
1N1711-68190	27	1

Parts No.	Fig. No.	Ref. No.
1N1711-68220	27	2
1N1711-71100-1	22	18
1N1711-73170	24	13
1N1711-73240	24	4
1N1711-73280	24	5
1N1723-00061	1	1
1N1723-00331	1	4
1N1723-32350	8	5
	12	2
1N1960-73502	24	6
1N3020-71301	23	14
1N3020-71320	23	21
1N3021-00250	1	3
1N3021-11240	2	6
1N3021-12020	3	5
1N3021-12050	3	12
1N3021-12100	3	2
1N3021-12150	3	3
1N3021-12300	3	6
1N3021-23040	30	3
1N3021-23051	30	4
1N3021-23060	30	5
1N3021-23070	30	6
1N3021-23100	30	7
1N3021-26050	30	19
1N3021-31451	7	15
1N3021-31480	7	16
1N3021-31580	7	18
1N3021-32381	9	5
1N3021-34390	13	2
1N3021-34710	13	8
1N3021-34720	13	9
1N3021-36130	15	3
1N3021-36401	15	8
1N3021-38101	17	3
	29	2
1N3021-38150	17	4
1N3021-38170	17	5
1N3021-38500	17	7
1N3021-38600	17	8
1N3021-51550	20	2
1N3021-51560	20	3
1N3021-52300	20	8
1N3021-71500	23	10
1N3021-73201	24	3
1N3021-74010	25	2
1N3021-74020	25	3
1N3021-74030	25	9
	31	10
1N3021-74080	25	11

Parts No.	Fig. No.	Ref. No.
1N3021-74130	25	4
1N3021-74200	25	23
1N3021-91100	27	6
1N3021-91110	27	7
1N3260-73250	13	12
1N3269-71500	23	9
1N3300-02150	1	22
1N3300-25100	17	2
1N3300-31400	7	14
1N3300-31500	7	17
1N3300-34201	12	4
1N3300-51010	18	1
1N3300-51400	19	2
1N3300-51451	19	5
1N3300-51480	21	2
1N3300-51552	20	7
1N3300-71301	23	13
1N3300-71320	23	15
1N3300-71330	23	16
1N3300-71401	22	6
1N3300-73202	24	14
1N3300-91300	27	10
1N3320-71290	2	11
	6	3
1N3330-31350	7	13
1N3330-32090	8	3
1N3330-34651	13	6
1N3330-34700	13	7
1N3330-75200	26	5
1N3335-11080	2	3
1N3335-32050	8	2
1N3335-32090	8	4
1N3335-32200	9	1
1N3335-32350	9	4
1N3360-30300	4	6
1N3360-30350	4	7
1N3360-32000	8	1
1N3360-35150	14	4
1N3360-36650	15	10
1N3360-38000	17	1
1N3360-51100	18	2
1N3360-51150	18	3
1N3360-51170	18	4
1N3360-51200	18	5
1N3360-51210	18	6
1N3370-00200	1	2
1N3370-01000	1	16
1N3370-11000	2	1
1N3370-11050	2	2
1N3370-11200	2	5

Parts No.	Fig. No.	Ref. No.
1N3370-11271	2	7
1N3370-11310	2	9
1N3370-11400	2	10
1N3370-12000	3	1
1N3370-12010	3	11
1N3370-12200	3	13
1N3370-31200	7	2
1N3370-31300	7	3
1N3370-31450	7	4
1N3370-31600	7	5
1N3370-31650	7	6
1N3370-31700	7	19
1N3370-32100	8	11
1N3370-32200	9	2
1N3370-32300	9	3
1N3370-32400	8	12
1N3370-33001	10	1
1N3370-33080	10	2
1N3370-33100	10	3
1N3370-33200	10	4
1N3370-33300	10	5
1N3370-33400	10	6
1N3370-33410	10	7
1N3370-33450	10	8
1N3370-33500	10	9
1N3370-33550	10	10
1N3370-33600	11	2
1N3370-34000	12	3
1N3370-35160	14	6
1N3370-36200	15	4
1N3370-38500	17	15
1N3370-51300	18	7
1N3370-51350	18	9
1N3370-51500	18	10
1N3370-71300	23	2
1N3370-71350	23	3
1N3370-74000	25	1
1N3370-74040	25	16
	31	16
1N3370-74050	25	10
1N3370-74200	25	17
	31	17
1N3370-75000	26	1
1N3370-75100	26	2
1N3370-76000	26	14
1N3390-02100	1	21
1N3390-30000	4	1
1N3390-31000	6	1
1N3390-31050	6	2
1N3390-34350	13	1

Parts No. Index

Parts No.	Fig. No.	Ref. No.
1N3390-34500	13	3
1N3390-34530	13	4
1N3390-34600	13	5
1N3390-35000	14	1
1N3390-35060	14	2
1N3390-35100	14	3
1N3390-35150	14	5
1N3390-35250	14	7
1N3390-35400	14	9
1N3390-35450	14	10
1N3390-38200	17	6
1N3390-73300	24	16
1N3390-73350	24	17
1N3390-91080	27	5
1N3390-91090	27	12
1N3390-91300	27	11
1N3390-92670	28	2
1N3390-92680	28	3
1N3390-92690	28	4
1N3390-92700	28	5
1N3390-96100	29	4
1N3400-02200	1	23
1N3400-11100	2	4
1N3400-11300	2	8
1N3400-30100	4	2
1N3400-35500	14	11
1N3400-51450	21	1
1N3400-91260	27	9
1N3405-35300	14	8
1N3405-36100	15	2
1N3405-36600	15	9
1N3405-51000	20	1
1N3405-74100	31	12
1N3405-91050	27	3
1N3405-91070	28	1
1N3405-91250	27	8
1N3410-74200	25	18
	31	29
1N3410-75000	26	3
1N3410-75100	26	4
1N3415-32200	9	20
1N3415-36010	15	1
1N3415-91050	27	4
1N3790-74000	31	2
1N3790-74010	31	3
1N3790-74080	31	11
1N3790-74200	31	23
1N3910-74130	31	4
1S6240-61430	9	9
22117-060000	1	26

Parts No.	Fig. No.	Ref. No.
22117-060000	7	8
		21
		22
		23
	12	8
22117-080000	7	24
	18	11
22117-100000	7	9
	10	13
		14
22117-120000	2	12
	10	15
22137-060000	13	13
	15	11
	23	4
		17
	24	7
22137-080000	1	27
	3	14
	4	4
	6	4
	10	16
	11	4
	13	14
	14	12
		13
	22	7
		8
	23	22
	24	18
	25	24
	31	24
22137-100000	1	17
	2	13
	9	11
22137-200000	17	9
22157-060000	2	14
		15
	5	2
	14	14
	18	12
	24	8
22157-080000	3	15
	14	15
		16
	15	12
	23	18
	26	6
22190-080000	25	5
	31	5

Parts No.	Fig. No.	Ref. No.
22190-120000	1	8
22190-140000	25	6
	31	6
22217-060000	1	9
	14	17
22217-080000	3	16
	14	18
	26	7
22217-100000	1	18
	4	8
22242-000100	2	16
	10	17
		18
22242-000120	10	19
22242-000150	3	7
22252-000350	2	17
22252-000420	25	19
22272-000050	1	28
22272-000060	14	19
22292-000100	9	12
22292-000200	17	10
22312-080100	31	7
22351-050020	7	25
	24	19
22351-060040	30	21
22372-040000	13	15
22417-160100	2	18
		19
	7	26
	27	27
	14	20
22417-200100	1	29
	7	10
	12	9
	13	16
22417-200120	17	11
	24	9
	29	5
22417-200160	7	28
	13	17
	14	21
22487-060160	14	22
22487-080120	14	23
22487-080160	14	24
22550-050200	10	20
22550-050201	3	8
22550-050300	3	17
	25	20
	26	8
		15

Parts No.	Fig. No.	Ref. No.
22550-050300	31	18
22550-070300	25	12
22550-070500	31	13
23414-200026	30	1
23491-080002	30	11
23887-200002	30	2
24101-060034	25	13
24101-060044	25	14
		21
	31	14
		19
24104-060004	10	21
24104-060044	17	12
24104-062034	22	9
	23	5
24107-062024	2	20
24311-000090	30	12
24311-000140	30	10
24421-153507	30	13
24421-203508	25	15
	31	15
		20
24421-204208	25	22
24421-254208	30	18
24550-010100	2	21
	10	22
24550-012060	9	13
24550-012100	10	23
24550-012150	7	11
24550-013150	2	22
24550-014100	8	8
24550-020100	17	13
25122-002901	3	9
26014-080302	31	8
		25
26014-080352	31	26
26016-060122	10	24
26016-060162	5	3
	17	14
26016-060204	1	10
26016-060252	25	7
26016-080162	4	5
26016-080164	7	29
	8	13
	18	13
	23	6
26016-080202	15	13
	17	16
26016-100202	4	9
26018-060124	1	11

Parts No. Index

Parts No.	Fig. No.	Ref. No.	
26018-060124	1	12	
	5	4	
	9	14	
	10	25	
	16	2	
	23	7	
		11	
		14	
		14	
		30	
26018-060162	8	14	
26018-060164	3	10	
26018-080162	2	23	
	3	4	
26018-080164	6	5	
	8	15	
	15	5	
		6	
	19	6	
	20	10	
	26018-080202	14	25
		15	14
		25	25
	26018-080204	13	18
14		26	
	15	7	
26023-040062	1	13	
26051-060002	1	19	
		30	
	15	15	
	18	14	
	22	10	
	23	8	
		19	
	24	10	
		15	
	26051-080002	2	24
		3	18
		6	6
		8	9
		9	15
			16
		17	
10		26	
14		27	
18		15	
19		7	
21		5	
22		11	
		12	
		13	
23	20		

Parts No.	Fig. No.	Ref. No.
26051-080002	24	20
	25	26
	31	27
26106-060162	1	15
26107-080162	25	8
	31	9
	26	9
26116-060202	29	6
	1	14
26116-060552	26	10
26116-080162	14	28
26116-080202	26	16
	31	28
	3	19
26116-080252	14	29
	26	11
	1	20
26116-100402	1	31
26117-060122	14	30
	22	14
	15	16
	15	17
	11	5
26117-060162	24	21
26117-060252	22	15
26117-060304	25	27
26117-080162	11	6
26117-080202	7	30
26117-080252	11	7
	15	18
	18	16
	24	11
	26	12
	29	7
	1	32
	6	7
	11	8
		9
14	31	
26347-060002	8	10
	12	10
	30	15
26347-080002	30	16
	30	17
26476-080302	6	8
26476-080402	2	25
26476-080652	14	32
26487-080252	23	12
26487-080352	1	33
26557-060252	9	18
26717-060002		
26717-080002		

Parts No.	Fig. No.	Ref. No.
26717-080002	9	19
	10	27
	13	19
		20
	26	13
	17	
26717-100002	4	10
28160-100120	29	1
29411-200000	20	4
7N3390-73000	24	2
7N3405-30290	5	1
7N3405-37010	16	1
7N3405-71000	22	2
7N3405-71010	22	16
7N3415-71000	22	3
7N3415-71010	22	17

Parts No.	Fig. No.	Ref. No.
-----------	----------	----------